

# Unit 4: Control flow

Cartagena99

CLASES PARTICULARES, TUTORÍAS TÉCNICAS ONLINE  
LLAMA O ENVÍA WHATSAPP: 689 45 44 70

---

ONLINE PRIVATE LESSONS FOR SCIENCE STUDENTS  
CALL OR WHATSAPP:689 45 44 70

# Structured programming

- It is programming paradigm based on:
  - Top-down design.
  - Structure theorem
    - “Any program can be written using only three control structures: sequence, selection and iteration”
- Structured programming
  - enhances readability
  - hence maintainability

Cartagena99

CLASES PARTICULARES, TUTORÍAS TÉCNICAS ONLINE  
LLAMA O ENVÍA WHATSAPP: 689 45 44 70

---

ONLINE PRIVATE LESSONS FOR SCIENCE STUDENTS  
CALL OR WHATSAPP:689 45 44 70

# Control flow

- **Algorithm:** set of ordered steps representing the sequence of statements needed to solve a problem, without employing a specific programming language.
- **Program:** set of statements written in a language close to the machine.
- **Sequence:** a set of statements or steps executed in a specific order.
- **Flow:** the sequence of execution of an algorithm.
- **Control flow:** a mechanism allowing to change the order of execution (flow) depending on data

Cartagena99

CLASES PARTICULARES, TUTORÍAS TÉCNICAS ONLINE  
LLAMA O ENVÍA WHATSAPP: 689 45 44 70

---

ONLINE PRIVATE LESSONS FOR SCIENCE STUDENTS  
CALL OR WHATSAPP:689 45 44 70

# Control Flow

- Linear
- Conditional
- Loops

Cartagena99

CLASES PARTICULARES, TUTORÍAS TÉCNICAS ONLINE  
LLAMA O ENVÍA WHATSAPP: 689 45 44 70

---

ONLINE PRIVATE LESSONS FOR SCIENCE STUDENTS  
CALL OR WHATSAPP:689 45 44 70

# Control Flow

## Linear Execution

Cartagena99

CLASES PARTICULARES, TUTORÍAS TÉCNICAS ONLINE  
LLAMA O ENVÍA WHATSAPP: 689 45 44 70

---

ONLINE PRIVATE LESSONS FOR SCIENCE STUDENTS  
CALL OR WHATSAPP:689 45 44 70

# Linear Execution

- Execution of a set of statements one after the other, without the chance of changing the behavior of the program depending on data
- Statements
  - Assignment (containing =)
  - Expressions
  - Input / output commands
  - Calls to function or scripts

Cartagena99

CLASES PARTICULARES, TUTORÍAS TÉCNICAS ONLINE  
LLAMA O ENVÍA WHATSAPP: 689 45 44 70

---

ONLINE PRIVATE LESSONS FOR SCIENCE STUDENTS  
CALL OR WHATSAPP:689 45 44 70

# Example of Linear Execution

- Example: MATLAB program for computing the sum of two numbers

```
x = input('Introduce a number:');  
y = input('Introduce another number:');  
sumxy = x + y;  
fprintf('The sum of the numbers introduced is %d', sumxy);
```

Cartagena99

CLASES PARTICULARES, TUTORÍAS TÉCNICAS ONLINE  
LLAMA O ENVÍA WHATSAPP: 689 45 44 70

---

ONLINE PRIVATE LESSONS FOR SCIENCE STUDENTS  
CALL OR WHATSAPP:689 45 44 70

# Example of Linear Execution

- Example: MATLAB program for computing the sum of two numbers

execution flow ↓

```
x = input('Introduce a number:');  
y = input('Introduce another number:');  
sumxy = x + y;  
fprintf('The sum of the numbers introduced is %d', sumxy);
```

Cartagena99

CLASES PARTICULARES, TUTORÍAS TÉCNICAS ONLINE  
LLAMA O ENVÍA WHATSAPP: 689 45 44 70

---

ONLINE PRIVATE LESSONS FOR SCIENCE STUDENTS  
CALL OR WHATSAPP:689 45 44 70



# Control Flow

## Conditional Execution

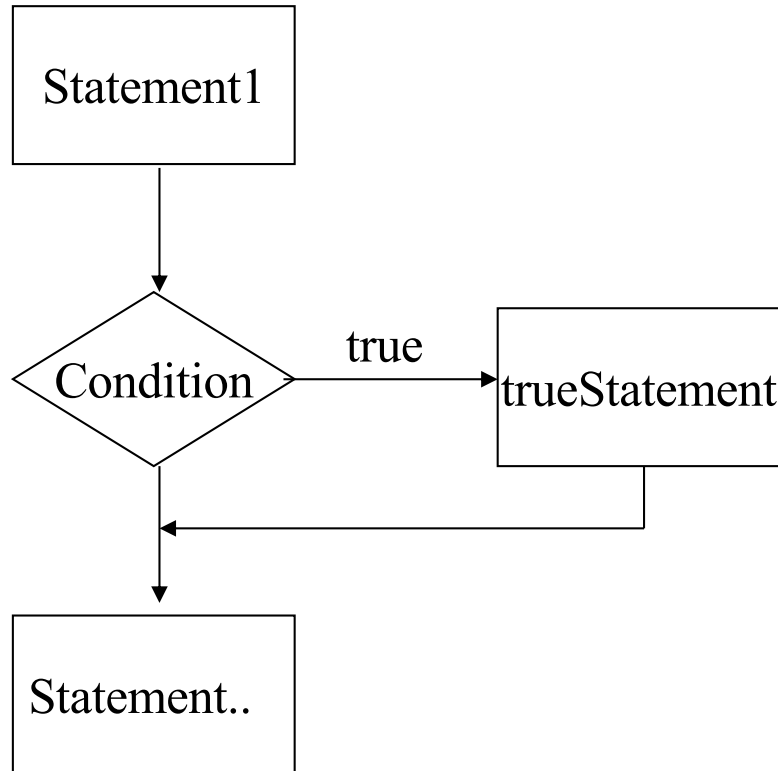
Cartagena99

CLASES PARTICULARES, TUTORÍAS TÉCNICAS ONLINE  
LLAMA O ENVÍA WHATSAPP: 689 45 44 70

---

ONLINE PRIVATE LESSONS FOR SCIENCE STUDENTS  
CALL OR WHATSAPP:689 45 44 70

# Conditional statement: if



## ■ Syntax:

```
if <expression is true>  
    statement1;  
    statement2;  
    ...  
end
```

*<expression is true>* is a condition, an expression that Matlab evaluates to check if it is true or false

Cartagena99

CLASES PARTICULARES, TUTORÍAS TÉCNICAS ONLINE  
LLAMA O ENVÍA WHATSAPP: 689 45 44 70

---

ONLINE PRIVATE LESSONS FOR SCIENCE STUDENTS  
CALL OR WHATSAPP:689 45 44 70

# Example of Conditional Statement

- Example:

```
x= input('Introduce a value for x: ');  
y=4;  
if (x > y)  
    disp('x is greater than y');  
end
```

Cartagena99

CLASES PARTICULARES, TUTORÍAS TÉCNICAS ONLINE  
LLAMA O ENVÍA WHATSAPP: 689 45 44 70

---

ONLINE PRIVATE LESSONS FOR SCIENCE STUDENTS  
CALL OR WHATSAPP:689 45 44 70

# Example of Conditional Statement

- Example:

Two possible  
execution flows

```
x=input('Introduce a value for x:');  
y=4;  
if (x > y)  
    disp('x is greater than y');  
end
```

Cartagena99

CLASES PARTICULARES, TUTORÍAS TÉCNICAS ONLINE  
LLAMA O ENVÍA WHATSAPP: 689 45 44 70

---

ONLINE PRIVATE LESSONS FOR SCIENCE STUDENTS  
CALL OR WHATSAPP:689 45 44 70

# Example of Conditional Statement

- Example: The first day of each month a sentence has to be printed to state that it is the beginning of the month

```
if ( dayMonth ==1)
    disp('Beginning of the month');
end
```

- Example: The first day of the month the list of tasks to be accomplished has to be printed

```
if ( dayMonth ==1 )
    disp('Check Agenda');
    disp('Buy a new transport card');
    disp('Pay rent');
```

Cartagena99

CLASES PARTICULARES, TUTORÍAS TÉCNICAS ONLINE  
LLAMA O ENVÍA WHATSAPP: 689 45 44 70

---

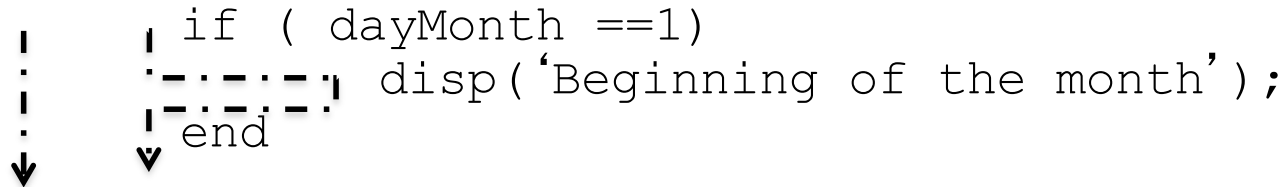
ONLINE PRIVATE LESSONS FOR SCIENCE STUDENTS  
CALL OR WHATSAPP:689 45 44 70

# Example of Conditional Statement

- Example: The first day of each month a sentence has to be printed to state that it is the beginning of the month

Two possible execution flows

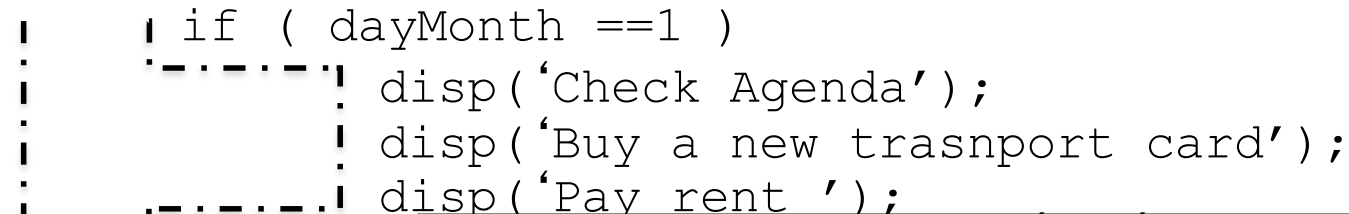
```
if ( dayMonth ==1)
  disp('Beginning of the month');
end
```



- Example: The first day of the month the list of tasks to be accomplished has to be printed

Two possible execution flows

```
if ( dayMonth ==1 )
  disp('Check Agenda');
  disp('Buy a new transport card');
  disp('Pay rent');
end
```



Cartagena99

CLASES PARTICULARES, TUTORÍAS TÉCNICAS ONLINE  
LLAMA O ENVÍA WHATSAPP: 689 45 44 70

---

ONLINE PRIVATE LESSONS FOR SCIENCE STUDENTS  
CALL OR WHATSAPP:689 45 44 70

# Condition

- When evaluating a condition the interpreter returns a result which can be either: *false* (value 0) or *true* (any value different from 0)
- The condition can be expressed in form of:
  - Relational Expression
  - Boolean Value
  - Simple
  - Compound

Cartagena99

CLASES PARTICULARES, TUTORÍAS TÉCNICAS ONLINE  
LLAMA O ENVÍA WHATSAPP: 689 45 44 70

---

ONLINE PRIVATE LESSONS FOR SCIENCE STUDENTS  
CALL OR WHATSAPP:689 45 44 70

# Condition

- When evaluating a condition the interpreter returns a result which can be either: *false* (value 0) or *true* (any value different from 0)
- The condition can be expressed in form of:
  - **Relational Expression**
  - Boolean Value
  - Simple
  - Compound

Example:

```
if (age > 18)
    ...
end;
```

Cartagena99

CLASES PARTICULARES, TUTORÍAS TÉCNICAS ONLINE  
LLAMA O ENVÍA WHATSAPP: 689 45 44 70

---

ONLINE PRIVATE LESSONS FOR SCIENCE STUDENTS  
CALL OR WHATSAPP:689 45 44 70



# Condition

- When evaluating a condition the interpreter returns a result which can be either: *false* (value 0) or *true* (any value different from 0)
- The condition can be expressed in form of:
  - Relational Expression
  - **Boolean Value**
  - Simple
  - Compound

Example:

```
if (open)
    ...
end;
```

Cartagena99

CLASES PARTICULARES, TUTORÍAS TÉCNICAS ONLINE  
LLAMA O ENVÍA WHATSAPP: 689 45 44 70

---

ONLINE PRIVATE LESSONS FOR SCIENCE STUDENTS  
CALL OR WHATSAPP:689 45 44 70

# Condition

- When evaluating a condition the interpreter returns a result which can be either: *false* (value 0) or *true* (any value different from 0)
- The condition can be expressed in form of:
  - Relational Expression
  - Boolean Value
  - **Simple** (one condition)
  - Compound

Example:

```
if (a == 18)
    ...
end;
```

Cartagena99

CLASES PARTICULARES, TUTORÍAS TÉCNICAS ONLINE  
LLAMA O ENVÍA WHATSAPP: 689 45 44 70

---

ONLINE PRIVATE LESSONS FOR SCIENCE STUDENTS  
CALL OR WHATSAPP:689 45 44 70

# Condition

- When evaluating a condition the interpreter returns a result which can be either: *false* (value 0) or *true* (any value different from 0)
- The condition can be expressed in form of:
  - Relational Expression
  - Boolean Value
  - Simple
  - **Compound** (several conditions joined using logical operators)

Example:

```
if ((a == 18) & (amount > base *25))
```

CLASES PARTICULARES, TUTORIAS TECNICAS ONLINE  
LLAMA O ENVÍA WHATSAPP: 689 45 44 70

---

ONLINE PRIVATE LESSONS FOR SCIENCE STUDENTS  
CALL OR WHATSAPP:689 45 44 70

Cartagena99

# Exercise

- Exercise: Write a program to help to validate the quantities introduced by the users of an ATM.
  - The program **asks the user to introduce** a quantity (the money he/she wants to retrieve from the machine) and **prints an error message when the quantity is less than 20.**

Cartagena99

CLASES PARTICULARES, TUTORÍAS TÉCNICAS ONLINE  
LLAMA O ENVÍA WHATSAPP: 689 45 44 70

---

ONLINE PRIVATE LESSONS FOR SCIENCE STUDENTS  
CALL OR WHATSAPP:689 45 44 70

# Exercise

- Exercise: The program asks the user to introduce a quantity and will prints an error message when the quantity is less than 20.

```
quantity = input('Introduce a quantity');  
if (quantity < 20)  
    disp ('Error. Quantity is not valid');  
end
```

**Cartagena99**

CLASES PARTICULARES, TUTORÍAS TÉCNICAS ONLINE  
LLAMA O ENVÍA WHATSAPP: 689 45 44 70

---

ONLINE PRIVATE LESSONS FOR SCIENCE STUDENTS  
CALL OR WHATSAPP:689 45 44 70

# Exercise

- Exercise: Modify the previous program so that it also prints the error message whenever the quantity is greater than 600

Cartagena99

CLASES PARTICULARES, TUTORÍAS TÉCNICAS ONLINE  
LLAMA O ENVÍA WHATSAPP: 689 45 44 70

---

ONLINE PRIVATE LESSONS FOR SCIENCE STUDENTS  
CALL OR WHATSAPP:689 45 44 70

# Exercise

- Exercise: Modify the previous program so that it also prints the error message whenever the quantity is greater than 600

```
quantity = input('Introduce a quantity');  
if (quantity < 20) | (quantity > 600)  
    disp('Error. Quantity is not valid');  
end
```

The program prints the error when the quantity is smaller than 20 **OR** it is greater than 600. If we use **AND** the

CLASES PARTICULARES, TUTORIAS TECNICAS ONLINE  
LLAMA O ENVÍA WHATSAPP: 689 45 44 70

---

ONLINE PRIVATE LESSONS FOR SCIENCE STUDENTS  
CALL OR WHATSAPP:689 45 44 70

Cartagena99

# Exercise

- Exercise: Modify the previous program so that it also prints the error message whenever the quantity is not multiple of 10
  - Note: to calculate the remainder after a division you can use the MATLAB function rem(num1, num2)

Cartagena99

CLASES PARTICULARES, TUTORÍAS TÉCNICAS ONLINE  
LLAMA O ENVÍA WHATSAPP: 689 45 44 70

---

ONLINE PRIVATE LESSONS FOR SCIENCE STUDENTS  
CALL OR WHATSAPP:689 45 44 70



# Exercise

- Exercise: Modify the previous program so that it also prints the error message whenever the quantity is not multiple of 10

```
quantity = input('Introduce a quantity');  
remainder10 = rem(quantity, 10);  
if ((quantity < 20) | (quantity > 600) | (remainder10 ~= 0))  
    disp ('Error. Quantity is not valid');  
end
```

**Cartagena99**

CLASES PARTICULARES, TUTORÍAS TÉCNICAS ONLINE  
LLAMA O ENVÍA WHATSAPP: 689 45 44 70

---

ONLINE PRIVATE LESSONS FOR SCIENCE STUDENTS  
CALL OR WHATSAPP:689 45 44 70

# Exercise

- Write a program which computes the wage of an employee and prints it on screen.

The program asks the user to introduce the number of hours worked a given week and his/her hourly wage. If the employee has worked more than 40 hours during his/her work week, he/she should be paid 1.5 times his/her hourly wage for all hours worked in

Cartagena99

CLASES PARTICULARES, TUTORÍAS TÉCNICAS ONLINE  
LLAMA O ENVÍA WHATSAPP: 689 45 44 70

---

ONLINE PRIVATE LESSONS FOR SCIENCE STUDENTS  
CALL OR WHATSAPP:689 45 44 70

# Exercise

```
hours = input('Introduce the number of hours worked: ');
wage  = input('Introduce your hourly wage: ');
totalWage = hours * wage;
if (hours > 40)
    extraWage = (hours -40) * (wage / 2);
    totalWage = totalWage + extraWage;
end

fprintf('\n Your payment this week is %.2f', totalWage);
```

**Cartagena99**

CLASES PARTICULARES, TUTORÍAS TÉCNICAS ONLINE  
LLAMA O ENVÍA WHATSAPP: 689 45 44 70

---

ONLINE PRIVATE LESSONS FOR SCIENCE STUDENTS  
CALL OR WHATSAPP:689 45 44 70

# Exercise

and another possible solution

```
hours = input('Introduce the number of hours worked: ');
wage  = input('Introduce your hourly wage: ');
if (hours <= 40)
    totalWage = hours * wage;
end
if (hours > 40)
    totalWage = 40 * wage + (hours-40) * wage * 1.5;
end
fprintf('\n Your payment this week is %.2f', totalWage);
```

This solution will also work. However, here we are using two different ifs for something we can do with just one. The first solution is nicer.

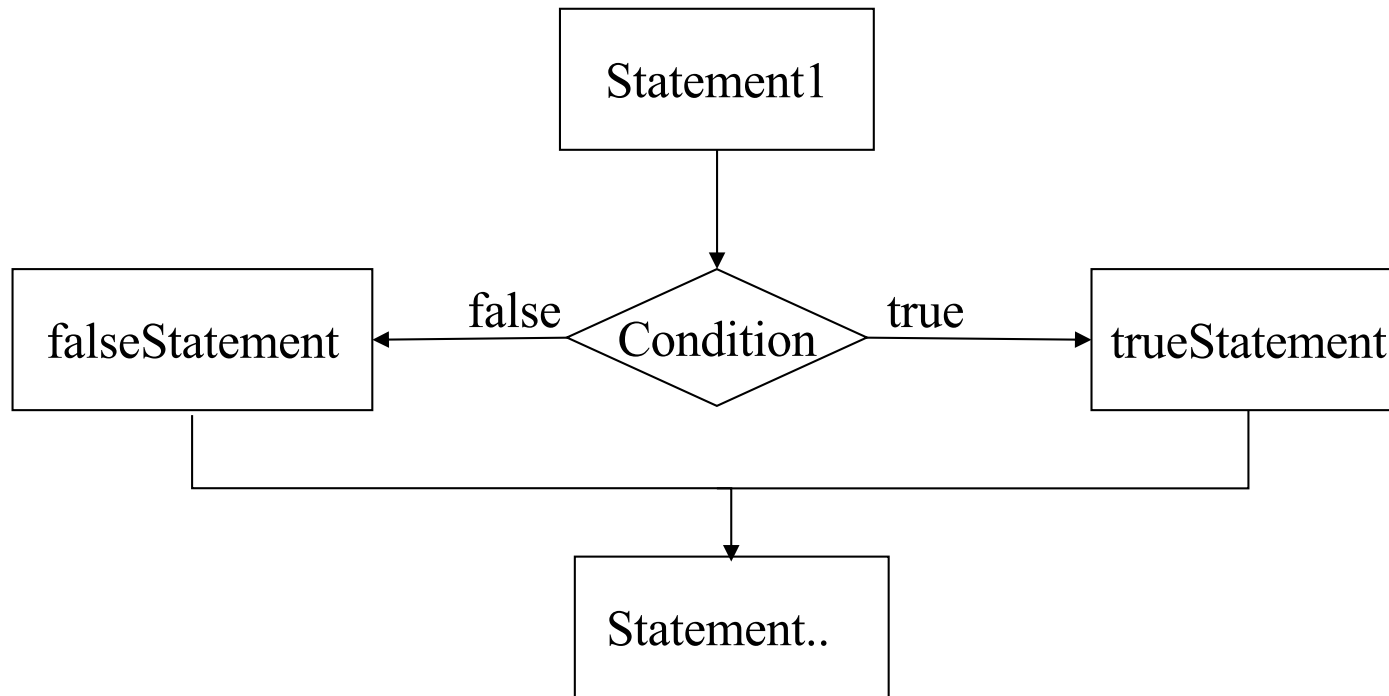
**Cartagena99**

CLASES PARTICULARES, TUTORÍAS TÉCNICAS ONLINE  
LLAMA O ENVÍA WHATSAPP: 689 45 44 70

---

ONLINE PRIVATE LESSONS FOR SCIENCE STUDENTS  
CALL OR WHATSAPP:689 45 44 70

# Conditional statement: if... else...



- **Syntax:**

```
if ( condition )  
    trueStatement;  
else
```

The **else** statement has no logical condition. The statements associated with

CLASES PARTICULARES, TUTORIAS TECNICAS ONLINE  
LLAMA O ENVÍA WHATSAPP: 689 45 44 70

---

ONLINE PRIVATE LESSONS FOR SCIENCE STUDENTS  
CALL OR WHATSAPP:689 45 44 70

Cartagena99

# Example of if-else

- Example

```
if ( x==y )  
    disp('x is equal to y');  
  
else  
    disp('x is not equal to y');  
  
end
```

**Cartagena99**

CLASES PARTICULARES, TUTORÍAS TÉCNICAS ONLINE  
LLAMA O ENVÍA WHATSAPP: 689 45 44 70

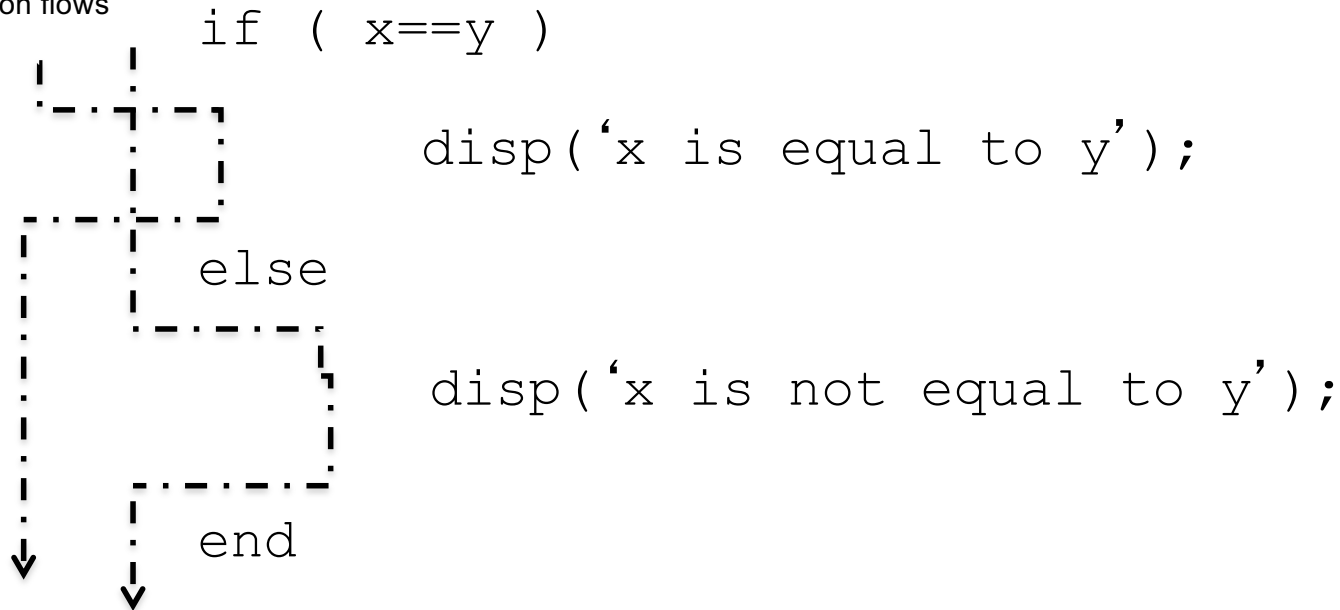
---

ONLINE PRIVATE LESSONS FOR SCIENCE STUDENTS  
CALL OR WHATSAPP:689 45 44 70

# Example of if-else

## ■ Example

Two possible execution flows



Cartagena99

CLASES PARTICULARES, TUTORÍAS TÉCNICAS ONLINE  
LLAMA O ENVÍA WHATSAPP: 689 45 44 70

---

ONLINE PRIVATE LESSONS FOR SCIENCE STUDENTS  
CALL OR WHATSAPP:689 45 44 70

# Example of if-else

- Example: The player wins when the ball of the roulette stops in an even number

```
numberStopped = input('Introduce the number of  
the roulette in which the ball stopped: ');
```

```
typeOfNumber = rem(numberStopped,2);
```

```
if (typeOfNumber == 0 )
```

```
    disp('Even. You win');
```

```
else
```

```
    disp('Odd. You lose');
```

**Cartagena99**

CLASES PARTICULARES, TUTORÍAS TÉCNICAS ONLINE  
LLAMA O ENVÍA WHATSAPP: 689 45 44 70

---

ONLINE PRIVATE LESSONS FOR SCIENCE STUDENTS  
CALL OR WHATSAPP:689 45 44 70



# Exercise

- Write a program which asks the user to introduce his/her age, and indicates if he/she can drive or not.

Example of the program execution:

Introduce your age: 17  
You are too young to drive!

Example of the program execution:

Introduce your age: 30  
Ok, you can drive.

Cartagena99

CLASES PARTICULARES, TUTORÍAS TÉCNICAS ONLINE  
LLAMA O ENVÍA WHATSAPP: 689 45 44 70

---

ONLINE PRIVATE LESSONS FOR SCIENCE STUDENTS  
CALL OR WHATSAPP:689 45 44 70

# Exercise

```
age = input('Introduce your age: ');

if (age >= 18)
    disp('OK, you can drive');
else
    disp('You are too young to drive');
end
```

Cartagena99

CLASES PARTICULARES, TUTORÍAS TÉCNICAS ONLINE  
LLAMA O ENVÍA WHATSAPP: 689 45 44 70

---

ONLINE PRIVATE LESSONS FOR SCIENCE STUDENTS  
CALL OR WHATSAPP:689 45 44 70

# Exercise

- Write a program which asks the user to introduce two **different** numbers and indicates which one is the smallest:

Example of the program execution:

Introduce one number: 5

Introduce another number: 75

The smallest number is 5

Example of the program execution:

Introduce one number: 30

Introduce another number: 20

The logo for Cartagena99, featuring the text 'Cartagena99' in a stylized font with a blue and orange gradient background.

CLASES PARTICULARES, TUTORÍAS TÉCNICAS ONLINE  
LLAMA O ENVÍA WHATSAPP: 689 45 44 70

---

ONLINE PRIVATE LESSONS FOR SCIENCE STUDENTS  
CALL OR WHATSAPP:689 45 44 70

# Exercise

```
num1 = input('Introduce a number: ');
num2 = input('Introduce another number: ');

if (num1 > num2)
    fprintf('The biggest number is %d', num1);
else
    fprintf('The biggest number is %d', num2);
end
```

Solution 1

Cartagena99

CLASES PARTICULARES, TUTORÍAS TÉCNICAS ONLINE  
LLAMA O ENVÍA WHATSAPP: 689 45 44 70

---

ONLINE PRIVATE LESSONS FOR SCIENCE STUDENTS  
CALL OR WHATSAPP:689 45 44 70

# Exercise

```
num1 = input('Introduce a number: ');
num2 = input('Introduce another number: ');
if (num1 > num2)
    biggest = num1;
else
    biggest = num2;
end
fprintf('The biggest number is %d', biggest);
```

Solution 2

Cartagena99

CLASES PARTICULARES, TUTORÍAS TÉCNICAS ONLINE  
LLAMA O ENVÍA WHATSAPP: 689 45 44 70

---

ONLINE PRIVATE LESSONS FOR SCIENCE STUDENTS  
CALL OR WHATSAPP:689 45 44 70

# Exercise

- The front tires of a car should both have the same pressure. Also, the rear tires of a car should both have the same pressure (but not necessarily the same pressure as the front tires). Write a program that asks the user to introduce the pressure of the four tires and writes a message that says if the inflation is OK or not.

Example of execution:

Right front pressure: 38

Left front pressure: 38

Right rear pressure: 42

Left rear pressure: 42

Example of execution:

Right front pressure: 38

Left front pressure: 38

Right rear pressure: 42

Left rear pressure: 39

Cartagena99

CLASES PARTICULARES, TUTORÍAS TÉCNICAS ONLINE  
LLAMA O ENVÍA WHATSAPP: 689 45 44 70

---

ONLINE PRIVATE LESSONS FOR SCIENCE STUDENTS  
CALL OR WHATSAPP:689 45 44 70

# Exercise

```
RF = input('Right front pressure: ');
LF = input('Left front pressure: ');
RR = input('Right rear pressure: ');
LR = input('Left rear pressure: ');

if ((RF==LF) & (RR == LR))
    disp('Inflation is OK');
else
    disp('Inflation is NOT OK');
end
```

Cartagena99

CLASES PARTICULARES, TUTORÍAS TÉCNICAS ONLINE  
LLAMA O ENVÍA WHATSAPP: 689 45 44 70

---

ONLINE PRIVATE LESSONS FOR SCIENCE STUDENTS  
CALL OR WHATSAPP:689 45 44 70

# Nested conditions

- Conditional statements can be nested
- Example: Given two numbers prints on screen if the numbers are both 0, equal or not equal.

Cartagena99

CLASES PARTICULARES, TUTORÍAS TÉCNICAS ONLINE  
LLAMA O ENVÍA WHATSAPP: 689 45 44 70

---

ONLINE PRIVATE LESSONS FOR SCIENCE STUDENTS  
CALL OR WHATSAPP:689 45 44 70



# Nested conditions

- Conditional statements can be nested
- Example: Given two numbers prints on screen if the numbers are both 0, equal or not equal.

```
if ( x==y )
    if (x == 0)
        disp('Both are 0');
    else
        disp('x is equal to y');
    end;
else
    disp('x is not equal to y');
end
```

**Cartagena99**

CLASES PARTICULARES, TUTORÍAS TÉCNICAS ONLINE  
LLAMA O ENVÍA WHATSAPP: 689 45 44 70

---

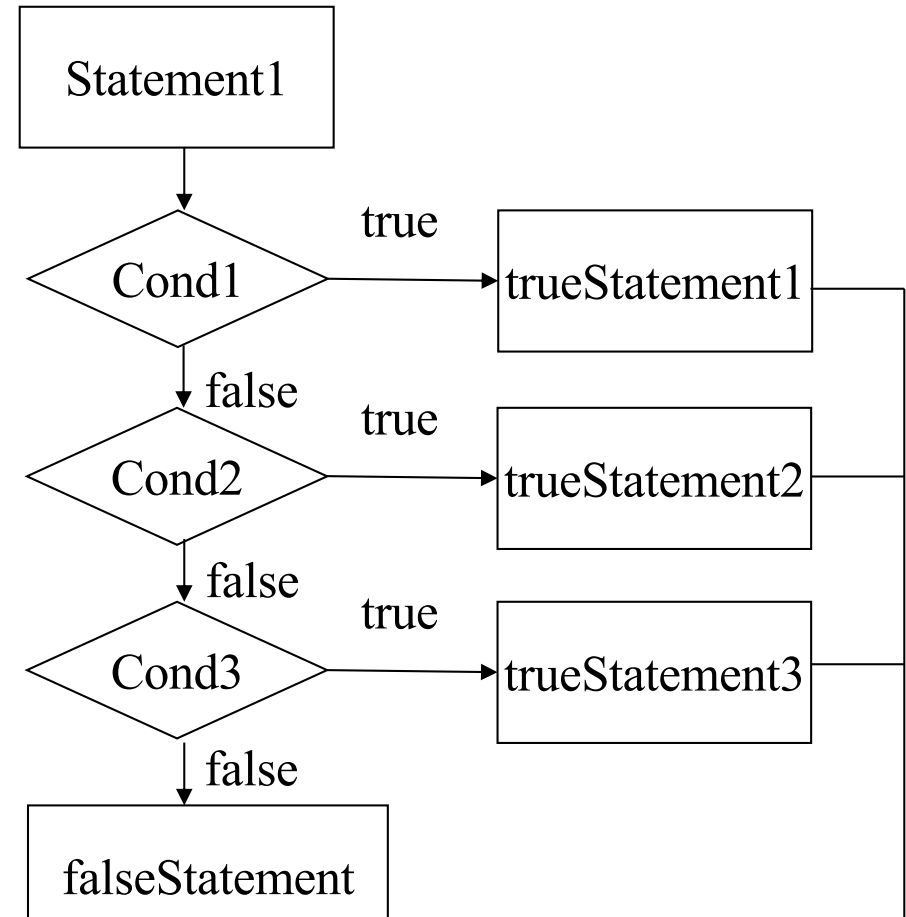
ONLINE PRIVATE LESSONS FOR SCIENCE STUDENTS  
CALL OR WHATSAPP:689 45 44 70

# Conditional statement: if... elseif...

- **Syntax:**

```
if ( condition1 )
    trueStatement1;
elseif ( condition2 )
    trueStatement2;
elseif ( condition3 )
    trueStatement3;
. . .
else
    falseStatement;
end;
```

You can use as many **elseif (condition)** as you want.



CLASES PARTICULARES, TUTORÍAS TÉCNICAS ONLINE  
LLAMA O ENVÍA WHATSAPP: 689 45 44 70

---

ONLINE PRIVATE LESSONS FOR SCIENCE STUDENTS  
CALL OR WHATSAPP:689 45 44 70



# Conditional statement: if... elseif...

- Example: Given two numbers prints on screen if the numbers are both 0, equal or not equal.

Cartagena99

CLASES PARTICULARES, TUTORÍAS TÉCNICAS ONLINE  
LLAMA O ENVÍA WHATSAPP: 689 45 44 70

---

ONLINE PRIVATE LESSONS FOR SCIENCE STUDENTS  
CALL OR WHATSAPP:689 45 44 70

# Conditional statement: if... elseif...

- Example: Given two numbers prints on screen if the numbers are both 0, equal or not equal.

- Solution

```
if ( ( x==0 ) & ( y==0 )
```

```
    disp( 'Both are 0' );
```

```
elseif ( x==y)
```

```
    disp( 'x is equal to y' );
```

```
else
```

The logo for Cartagena99, featuring the text 'Cartagena99' in a stylized font with a blue and orange gradient background.

CLASES PARTICULARES, TUTORÍAS TÉCNICAS ONLINE  
LLAMA O ENVÍA WHATSAPP: 689 45 44 70

---

ONLINE PRIVATE LESSONS FOR SCIENCE STUDENTS  
CALL OR WHATSAPP:689 45 44 70

# Exercise

- Write a program to convert a numerical grade to a letter grade, 'A', 'B', 'C', 'D' or 'F', where the cutoffs for 'A', 'B', 'C', and 'D' are 90, 80, 70, and 60 respectively.

EXAMPLE:

Introduce your numerical grade: 80

Your letter grade is B

The logo for Cartagena99, featuring the text "Cartagena99" in a stylized font with a blue and orange gradient background.

CLASES PARTICULARES, TUTORÍAS TÉCNICAS ONLINE  
LLAMA O ENVÍA WHATSAPP: 689 45 44 70

---

ONLINE PRIVATE LESSONS FOR SCIENCE STUDENTS  
CALL OR WHATSAPP:689 45 44 70

# Exercise

```
score = input ('Introduce your numerical grade:');
if (score >=90)
    letter = 'A';
elseif (score >=80)
    letter = 'B';
elseif (score >=70)
    letter = 'C';
elseif (score >=60)
    letter = 'D';
else
    letter = 'F';
end
fprintf('\n Your letter grade us %c', letter);
```

**Cartagena99**

CLASES PARTICULARES, TUTORÍAS TÉCNICAS ONLINE  
LLAMA O ENVÍA WHATSAPP: 689 45 44 70

---

ONLINE PRIVATE LESSONS FOR SCIENCE STUDENTS  
CALL OR WHATSAPP:689 45 44 70

# Exercise

- An apple costs 0.20 euros, a coffee 1 euro, a pair of trainers 60 euros. Write a program which asks the user to introduce a quantity of euros, and prints on screen the list of names of products he/she could afford to buy.

EXAMPLE:

Introduce euros: 35  
You can buy apples  
or coffees

EXAMPLE:

Introduce euros: 0.3  
You can buy apples

EXAMPLE:

Introduce euros: 0.1  
Sorry, not enough money ...

Cartagena99

CLASES PARTICULARES, TUTORÍAS TÉCNICAS ONLINE  
LLAMA O ENVÍA WHATSAPP: 689 45 44 70

---

ONLINE PRIVATE LESSONS FOR SCIENCE STUDENTS  
CALL OR WHATSAPP: 689 45 44 70

# Exercise

```
euros = input('Introduce a euros');  
if (euros < 0.20)  
    disp('You can''t buy anything...');  
elseif (euros < 1)  
    disp('You can buy apples');  
elseif (euros < 60)  
    disp('You can buy apples or coffees');  
else  
    disp('You can buy apples, coffee or traineers');  
end
```

The logo for Cartagena99, featuring the text 'Cartagena99' in a stylized font with a blue and orange gradient background.

CLASES PARTICULARES, TUTORÍAS TÉCNICAS ONLINE  
LLAMA O ENVÍA WHATSAPP: 689 45 44 70

---

ONLINE PRIVATE LESSONS FOR SCIENCE STUDENTS  
CALL OR WHATSAPP:689 45 44 70



# Exercise

Note:

This solution will work as well (although it is less clear)

Remember: There is always more than one way to solve the problem. Try to choose the simplest and most efficient solution

```
euros = input('Introduce euros');  
if (euros < 0.20)  
    disp('Sorry, not enough money to buy anything..');  
elseif (euros >= 0.20) & (euros < 1)  
    disp('You can buy apples');  
elseif (euros >= 1) & (euros < 60)  
    disp('You can buy apples or coffees');  
elseif (euros >= 60)
```

Cartagena99

CLASES PARTICULARES, TUTORÍAS TÉCNICAS ONLINE  
LLAMA O ENVÍA WHATSAPP: 689 45 44 70

ONLINE PRIVATE LESSONS FOR SCIENCE STUDENTS  
CALL OR WHATSAPP:689 45 44 70

# Exercise

- Exercise: Write a program which asks the user to introduce two numbers and indicates if they are equal or which one is the smaller

EXAMPLE:

Introduce a number: 4  
Introduce another number: 4  
The two numbers are equal

EXAMPLE:

Introduce a number: 7  
Introduce another number: 5  
The smaller is 5

Cartagena99

CLASES PARTICULARES, TUTORÍAS TÉCNICAS ONLINE  
LLAMA O ENVÍA WHATSAPP: 689 45 44 70

---

ONLINE PRIVATE LESSONS FOR SCIENCE STUDENTS  
CALL OR WHATSAPP:689 45 44 70

# Exercise

```
numb1 = input('Introduce a number');  
numb2 = input('Introduce another number');  
  
if (numb1 > numb2)  
    fprintf('\ The smaller is %d', num2);  
elseif (numb1 < numb2)  
    fprintf('\ The smaller is %d', num1);  
else  
    disp('The numbers are equal');  
end
```

The logo for Cartagena99, featuring the text 'Cartagena99' in a stylized font with a blue and orange gradient background.

CLASES PARTICULARES, TUTORÍAS TÉCNICAS ONLINE  
LLAMA O ENVÍA WHATSAPP: 689 45 44 70

---

ONLINE PRIVATE LESSONS FOR SCIENCE STUDENTS  
CALL OR WHATSAPP:689 45 44 70

# Exercise

- Exercise: Write a program which asks the user to introduce a number between 1 and 7 and print on the screen the correspondent day of the week

EXAMPLE:

Introduce a number between 1 and 7: 5

Friday

Cartagena99

CLASES PARTICULARES, TUTORÍAS TÉCNICAS ONLINE  
LLAMA O ENVÍA WHATSAPP: 689 45 44 70

---

ONLINE PRIVATE LESSONS FOR SCIENCE STUDENTS  
CALL OR WHATSAPP:689 45 44 70

# Exercise

```
number=input('Introduce a number');  
if (number==1)  
    disp('Monday');  
elseif (number==2)  
    disp('Tuesday');  
elseif (number==3)  
    disp('Wednesday');  
elseif (number==4)  
    disp('Thursday');  
elseif (number==5)  
    disp('Friday');  
elseif (number==6)  
    disp('Saturday');  
elseif (number==7)  
    disp('Sunday');
```

**Cartagena99**

**CLASES PARTICULARES, TUTORÍAS TÉCNICAS ONLINE  
LLAMA O ENVÍA WHATSAPP: 689 45 44 70**

---

**ONLINE PRIVATE LESSONS FOR SCIENCE STUDENTS  
CALL OR WHATSAPP:689 45 44 70**

# Conditional statement: switch

```
switch (variable)
  case value_1
    statement_1_1
    statement_1_2
    ..
  case value_2
    statement_2_1
    statement_2_2
    ..
  ..
  ..
  otherwise
    statement_other
end
```

**Cartagena99**

CLASES PARTICULARES, TUTORÍAS TÉCNICAS ONLINE  
LLAMA O ENVÍA WHATSAPP: 689 45 44 70

---

ONLINE PRIVATE LESSONS FOR SCIENCE STUDENTS  
CALL OR WHATSAPP:689 45 44 70

# Conditional statement: switch

```
switch (variable) ← variable containing a number, character or string
  case value_1
    statement_1_1 ← executes if the variable is value_1
    statement_1_2
    ..
  case value_2
    statement_2_1 ← executes if the variable is value_2
    statement_2_2
    ..
  ..
  ..
  otherwise ← executes if the variable does not match any other case
    statement_other
end
```

**Cartagena99**

CLASES PARTICULARES, TUTORÍAS TÉCNICAS ONLINE  
LLAMA O ENVÍA WHATSAPP: 689 45 44 70

---

ONLINE PRIVATE LESSONS FOR SCIENCE STUDENTS  
CALL OR WHATSAPP:689 45 44 70

# Example of Conditional statement Switch

```
switch number
  case 1
    disp( 'Monday' );
  case 2
    disp( 'Tuesday' );
  case 3
    disp( 'Wednesday' );
  case 4
    disp( 'Thursday' );
  case 5
    disp( 'Friday' );
  case 6
    disp( 'Saturday' );
  case 7
```

**Cartagena99**

CLASES PARTICULARES, TUTORÍAS TÉCNICAS ONLINE  
LLAMA O ENVÍA WHATSAPP: 689 45 44 70

---

ONLINE PRIVATE LESSONS FOR SCIENCE STUDENTS  
CALL OR WHATSAPP:689 45 44 70



# Example of Conditional statement Switch

THE TWO SOLUTIONS ARE VALID

```
switch number
  case 1
    disp('Monday');
  case 2
    disp('Tuesday');
  case 3
    disp('Wednesday');
  case 4
    disp('Thursday');
  case 5
    disp('Friday');
  case 6
    disp('Saturday');
  case 7
    disp('Sunday');
```

```
if (number==1)
  disp('Monday');
elseif (number==2)
  disp('Tuesday');
elseif (number==3)
  disp('Wednesday');
elseif (number==4)
  disp('Thursday');
elseif (number==5)
  disp('Friday');
elseif (number==6)
  disp('Saturday');
elseif (number==7)
  disp('Sunday');
```

**Cartagena99**

CLASES PARTICULARES, TUTORÍAS TÉCNICAS ONLINE  
LLAMA O ENVÍA WHATSAPP: 689 45 44 70

---

ONLINE PRIVATE LESSONS FOR SCIENCE STUDENTS  
CALL OR WHATSAPP:689 45 44 70

# Conditional statement: switch

Switch only can be used to check **if something is equal to...**

- When the evaluated variable is
  - a number or a character the operator Matlab uses for comparing with the cases is **==**
  - a String the function Matlab uses for comparing with the cases is **strcmp**
    - *STRCMP(S1,S2) compares the strings S1 and S2 and returns logical 1 (true) if they are identical, and returns logical 0 (false) otherwise.*
- The *otherwise* statement is optional
- If there are more than one valid 'cases' for the expression, only the first one will be executed
- Multiple conditions can be handled in a single case statement by enclosing the case expression in { }

Cartagena99

CLASES PARTICULARES, TUTORÍAS TÉCNICAS ONLINE  
LLAMA O ENVÍA WHATSAPP: 689 45 44 70

---

ONLINE PRIVATE LESSONS FOR SCIENCE STUDENTS  
CALL OR WHATSAPP:689 45 44 70

# Exercise

- Exercise: Write a program which asks the user to introduce a character of the alphabet and indicates if its a vowel or not.

EXAMPLE:

Introduce a characer: e

It is a vowel

Cartagena99

CLASES PARTICULARES, TUTORÍAS TÉCNICAS ONLINE  
LLAMA O ENVÍA WHATSAPP: 689 45 44 70

---

ONLINE PRIVATE LESSONS FOR SCIENCE STUDENTS  
CALL OR WHATSAPP:689 45 44 70

# Exercise

```
yourchar = input('Introduce a character: ','s');
switch yourchar
case 'a'
    disp('It is a vowel');
case 'e'
    disp('It is a vowel');
case 'i'
    disp('It is a vowel');
case 'o'
    disp('It is a vowel');
case 'u'
    disp('It is a vowel');
otherwise
```

**Cartagena99**

CLASES PARTICULARES, TUTORÍAS TÉCNICAS ONLINE  
LLAMA O ENVÍA WHATSAPP: 689 45 44 70

---

ONLINE PRIVATE LESSONS FOR SCIENCE STUDENTS  
CALL OR WHATSAPP:689 45 44 70

# Exercise

```
yourchar = input('Introduce a character: ','s');  
switch yourchar  
    case { 'a', 'e', 'i', 'o', 'u' }  
        disp('It is a vowel');  
    otherwise  
        disp('It is not a vowel');  
end
```

Cartagena99

CLASES PARTICULARES, TUTORÍAS TÉCNICAS ONLINE  
LLAMA O ENVÍA WHATSAPP: 689 45 44 70

---

ONLINE PRIVATE LESSONS FOR SCIENCE STUDENTS  
CALL OR WHATSAPP:689 45 44 70

# Exercise

- Exercise: Modify the weekday program so it asks the user to introduce the number of day of the week and says if it is a working day, weekend or a not correct number.

Example:

Introduce the number of day of the week: 5

It is a working day

Cartagena99

CLASES PARTICULARES, TUTORÍAS TÉCNICAS ONLINE  
LLAMA O ENVÍA WHATSAPP: 689 45 44 70

---

ONLINE PRIVATE LESSONS FOR SCIENCE STUDENTS  
CALL OR WHATSAPP:689 45 44 70

# Exercise

```
weekday = input('Introduce the number of day of the week ');
switch weekday
    case {1,2,3,4,5}
        disp('It is a working day');
    case {6,7}
        disp('Weekend!');
    otherwise
        disp('Sorry, incorrect number');
end
```

**Cartagena99**

CLASES PARTICULARES, TUTORÍAS TÉCNICAS ONLINE  
LLAMA O ENVÍA WHATSAPP: 689 45 44 70

---

ONLINE PRIVATE LESSONS FOR SCIENCE STUDENTS  
CALL OR WHATSAPP:689 45 44 70