

Types of medium

- Homogeneous medium : properties described are always the same
- Heterogeneous medium : properties vary w/ location of sampling.

CONTINUUM APPROACH : In modeling media flow, it's important to considerate ϵ valid if the mean free path length of the fluid molec. is much smaller than the physical domain of interest.

- (a) Macroscopic (inhomogeneity) (b) Microscopic (c) molecular

Fluid prop. like viscosity, density, diffusion coeff. & miscibility are determined on the molecular scale by the individual prop. of the molecules.

- (b) The flow of a single newtonian fluid in the void space of a porous medium is described on the microscopic level by the Navier-Stokes system of equations with appropriate boundary conditions.

The Creeping Flow interface approximates the Navier-Stokes equations for the case when the Reynolds number is significantly less than 1.

This is often called Stokes flow and it is appropriate for use when viscous flow is dominant.

- (a) In order to derive a mathematical model on the macroscopic level another continuum is considered.

Each point \mathbf{x} in the continuum on the macroscopic level is assigned average values over elementary volume of quantities on the microscopic levels.

"Representative elementary volume": the averaging process used for passing from microscopic to macroscopic level is illustrated for the porosity, a simple geometric property of the porous medium. $1 \ll \text{diam}(\Omega_0(\mathbf{x}_0)) \ll L$



The porous medium is supposed to fill the domain Ω w/ volume meas. (Ω)
Let $\Omega_0(\mathbf{x}_0)$ belongs to Ω be a subdomain of Ω centered at the point \mathbf{x}_0 on the macroscopic level.

Further we define the void space indicator function on the microscopic level:

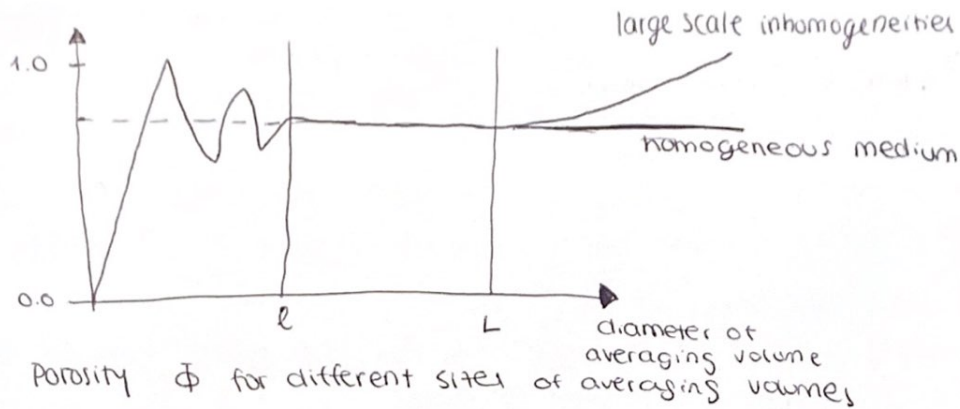
CLASES PARTICULARES, TUTORÍAS TÉCNICAS ONLINE
LLAMA O ENVÍA WHATSAPP: 689 45 44 70

ONLINE PRIVATE LESSONS FOR SCIENCE STUDENTS
CALL OR WHATSAPP: 689 45 44 70

Cartagena99

The macroscopic quantity porosity is obtained by averaging over the microscopic void space indicator function.

Plotting the value of $\Omega(x_0)$ at a fixed position x_0 for different diameters d of the averaging volume $\Omega_0(x_0)$.



POROUS MEDIA

• SINGLE - PHASE FLUID FLOW AND TRANSPORT

↳ one fluid

consider macroscopic eqs for flow & transport in porous media when the void space is filled w/ a single fluid

• FLUID MASS CONSERVATION

Suppose that the porous medium fills the domain $\Omega \subset \mathbb{R}^3$ then the macroscopic fluid mass conservation is expressed by the partial differential equation is given by :

$$\frac{\partial (\Phi \rho)}{\partial t} + \nabla \cdot \{ \rho \cdot u \} = \rho \cdot q \quad \text{in } \Omega.$$

$\Phi(x)$: Porosity

$\rho(x;t)$: density of the fluid (kg/m^3)

↳ either constant if incompressible or assumed to be ideal gas : $p = \rho \cdot R \cdot T$.

$u(x;t)$: Macroscopic apparent velocity (m/s)

$q(x;t)$: Specific source / sink term with dimensions (s^{-1})

• DARCY'S LAW (1856)

**CLASES PARTICULARES, TUTORÍAS TÉCNICAS ONLINE
LLAMA O ENVÍA WHATSAPP: 689 45 44 70**

**ONLINE PRIVATE LESSONS FOR SCIENCE STUDENTS
CALL OR WHATSAPP: 689 45 44 70**

Cartagena99

vector pointing in the direction of gravity with size g (m/s^2)

Inserting equation (18) in (17) yields a single eq for fluid pressure.

$$(19) \quad \frac{\partial(\phi p)}{\partial t} - \nabla \cdot \left\{ \rho \cdot \frac{k}{\mu} (\nabla p - \rho g) \right\} = \rho g \quad \text{in } \Omega.$$

with initial boundary conditions :

$$p(x, 0) = p_0(x) \quad \text{in } \Omega$$

• $p(x, t) = p_d(x, t)$ on I_d : DIRICHLET BOUNDARY

$$\frac{\partial^2 f}{\partial x_i^2} + x_i = 0 \quad ; \quad [0, 1] \text{ domain, } \quad \begin{aligned} f(0) &= \alpha_1, \text{ Numeric value} \\ f(1) &= \alpha_2, \text{ Numeric value} \end{aligned}$$

• $\rho \cdot u \cdot n = \phi(x, t)$ on I_n : NEUMANN BOUNDARY

$$\frac{\partial f}{\partial x_i}(0) = \alpha_1 \quad ; \quad \frac{\partial f}{\partial x_i}(1) = \alpha_2$$

In case of a compressible fluid (eq. 19) \Rightarrow Parabolic type
of an incompressible fluid \Rightarrow elliptic type \Rightarrow (initial cond. not necessary)

MICROSCOPIC CONSIDERATIONS OF MULTIPHASE SYSTEMS

Single-phase flow is governed by pressure forces arising from pressure differences within the reservoir & the exterior gravitational force. In multiphase flows the sharp interfaces between fluid phases on the microscopic level give rise to a capillary force that plays an important role in this flow.

- * NOTE :
- Darcy's law is valid for slow flow of Newtonian fluids through a porous medium with rigid solid matrix.
 - No slip boundary conditions are assumed at the fluid-solid boundary on the microscopic level.

VISCOUS FLOW BETWEEN PARALLEL PLATES

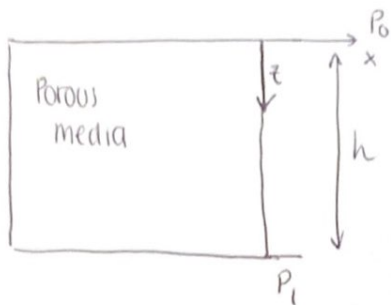


CLASES PARTICULARES, TUTORÍAS TÉCNICAS ONLINE
LLAMA O ENVÍA WHATSAPP: 689 45 44 70

ONLINE PRIVATE LESSONS FOR SCIENCE STUDENTS
CALL OR WHATSAPP: 689 45 44 70

Cartagena99

Problema de poros media



Assumptions

- 1) Incompressible
- 2) Steady state
- 3) Constant properties (μ and k constant)

Solution:

$$\cancel{\frac{\partial \phi}{\partial t}} \rightarrow \nabla \cdot \left(\cancel{\frac{k}{\mu}} (\nabla P - \rho \cdot g) \right) = \cancel{\rho} g$$

Since it's incompressible, ρ is out of the eq. $\rho = 0$ therefore

$$-\nabla \cdot \frac{k}{\mu} (\nabla P - \rho \cdot g) = q$$

$$-\frac{d}{dz} \cdot \frac{k}{\mu} \left(\frac{dP}{dz} - \rho \cdot g \right) = q$$

$$\frac{k}{\mu} \left(\frac{dP}{dz} - \rho \cdot g \right) = -qz + C_1$$

$$\frac{dP}{dz} - \rho \cdot g = (-qz + C_1) \frac{\mu}{k} ; \frac{dP}{dz} = (-qz + C_1) \frac{\mu}{k} + \rho g$$

$$\left[P(z) = -qz^2 \cdot \frac{\mu}{2k} + C_1 \cdot z \cdot \frac{\mu}{k} + \rho \cdot g \cdot z + C_2 \right]$$

Boundary conditions

$$z(0) = P_0 ; z(h) = P_1$$

$$z(0) = P_0 = C_2$$

$$z(h) = P_1 = -\frac{q}{2} h^2 \frac{\mu}{k} + C_1 \cdot h \cdot \frac{\mu}{k} + \rho \cdot g \cdot h + P_0$$

$$C_1 = \left(\frac{k}{\mu} \cdot \frac{q}{2} \cdot \frac{h^2}{h} \cdot \frac{\mu}{k} \right) - \left(\frac{k}{\mu} \rho g h \right) - \left(\frac{P_0 k}{h \mu} - \frac{P_1 k}{h \mu} \right)$$

$$C_1 = \frac{qh}{2} - \frac{k}{\mu} \rho g + \frac{(P_1 - P_0)k}{\mu h}$$

$$P(z) = -\frac{q \cdot z^2}{2} \frac{\mu}{k} + \left(\frac{qh}{2} - \frac{k}{\mu} \rho g + \frac{(P_1 - P_0)k}{\mu h} \right) z \frac{\mu}{k} + \rho g z + P_0$$

Cartagena99

CLASES PARTICULARES, TUTORÍAS TÉCNICAS ONLINE
LLAMA O ENVÍA WHATSAPP: 689 45 44 70

ONLINE PRIVATE LESSONS FOR SCIENCE STUDENTS
CALL OR WHATSAPP: 689 45 44 70

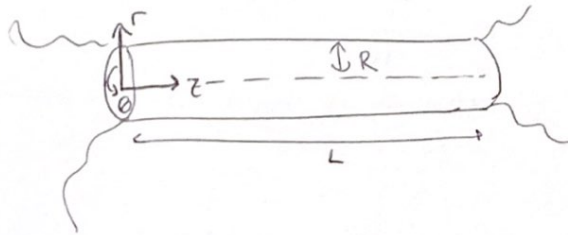
· CAPILLARITY

Next figure shows the interface between two phases in more detail. On the molecular level adhesive forces are attracting fluid molecules to the solid and cohesive forces are attracting molecules of one fluid to each other.

At the fluid-fluid interface these forces are not balanced leading to the curved form of the interface.



★ Viscous flow through a capillary



In cylindrical coordinates, the Stokes momentum equation becomes

$$\mu_B \cdot \frac{1}{r} \cdot \frac{\partial}{\partial r} \left(r \cdot \frac{\partial v_z}{\partial r} \right) = \frac{\Delta P}{L}$$

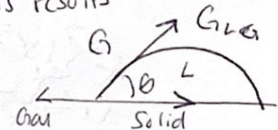
· WETTABILITY

The magnitude of the adhesive forces is decreasing rapidly with distance to the wall. The interaction w , the cohesive forces leads to a specific contact angle θ between the solid surface & the fluid-fluid interface that depends on the properties of the fluid.

· SURFACE TENSION

The cohesive forces are not balanced at a fluid-fluid interface. Molecules of the wetting phase fluid at the interface experience a net attraction towards the interior of the wetting phase fluid body. This results in the curved form of the interface.

$$\sigma = \frac{\Delta W}{\Delta A} \left[\frac{J}{m^2} \right] \left\{ \frac{N \cdot m}{m^2} = \frac{N}{m} \right\}$$



CAPILLARITY PRESSURE

In order to derive a relation, it considers a tube with radius diameter $2R$ that is filled w/ a wetting phase and a non-wetting phase.

CLASES PARTICULARES, TUTORÍAS TÉCNICAS ONLINE
LLAMA O ENVÍA WHATSAPP: 689 45 44 70

ONLINE PRIVATE LESSONS FOR SCIENCE STUDENTS
CALL OR WHATSAPP: 689 45 44 70

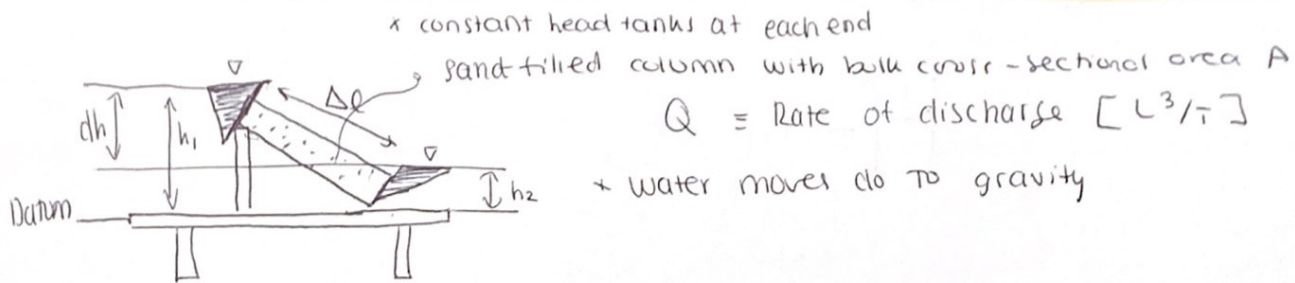
Cartagena99

According to $P_c = \frac{2\sigma \cdot \cos\theta}{R}$, capillary pressure increases with decreasing pore size diameter.

Similar arguments relate capillary pressure (Laplace's eqs')

$$P_c = \sigma \left(\frac{1}{r_1} + \frac{1}{r_2} \right)$$

DARCY'S LAW



For a particular sand : $Q = -K \cdot A \cdot \frac{dh}{dl}$

if we invert it we express conductivity in terms of discharge, area & gradient

$$K = \frac{Q}{A} \left[\frac{-1}{dh/dl} \right]$$

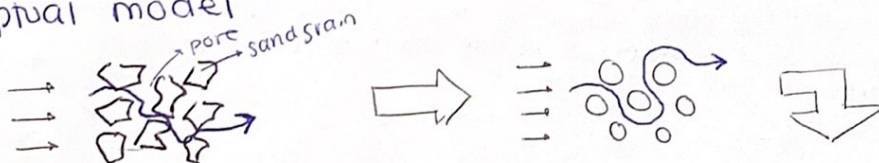
We will look at 3 major topics important to Darcy's Law:

$$Q = K A \cdot \frac{dh}{dl}$$

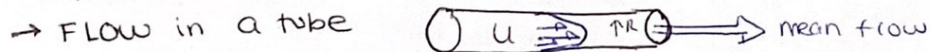
Hydraulic Head Gradient
 Bulk cross-sectional area of flow
 Hydraulic conductivity (intrinsic)

class explanation: $P = \rho \cdot g \cdot h$; $\frac{P}{\rho \cdot g} = h$ (wavy)

Conceptual model



There are two standard, simple models used to explain Darcy's Law, and thus to explore the Reynolds number:



Cartagena99

CLASES PARTICULARES, TUTORÍAS TÉCNICAS ONLINE
LLAMA O ENVÍA WHATSAPP: 689 45 44 70

ONLINE PRIVATE LESSONS FOR SCIENCE STUDENTS
CALL OR WHATSAPP: 689 45 44 70

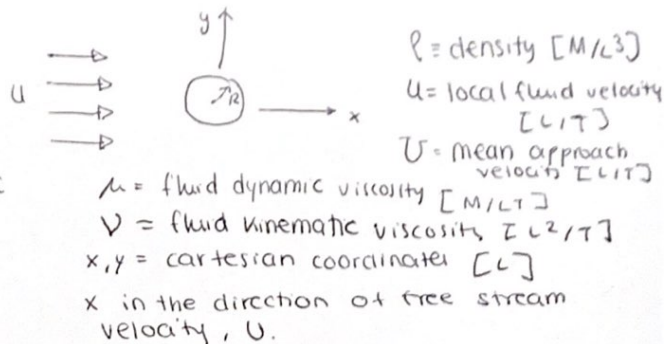
+ Darcy's law

• FLOW in the vicinity of a sphere

- Inertial force per unit volume at any location : Rate of change of momentum
- viscous force per unit volume.
- Dynamic similarity

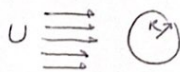
Using a dimensional analysis approach, assume that functions vary with characteristic quantities U and R , thus

$$u \propto \frac{\partial^2 u}{\partial y^2} \propto \frac{\partial u}{\partial x}$$



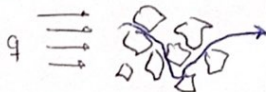
x For a fluid flow past a sphere : Re

$$Re = \frac{\rho \cdot U R}{\mu} = \frac{UR}{\nu}$$



x For a flow in porous media : Re

$$Re = \rho q L / \mu$$



where

q = specific discharge

L = characteristic pore dimension

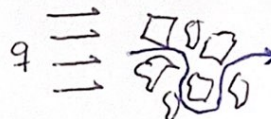
* sand : $L = d_{50}$

When does Darcy's Law apply in a porous media?

- For $Re < 1$ to 10
 - Flow is laminar and linear
 - Darcy's Law applies

$$Re = \frac{\rho \cdot q d_{50}}{\mu} = \frac{q d_{50}}{\nu}$$

- For $Re \geq 1$ to 10
 - Flow is still laminar but not linear
 - Inertial forces becoming important
 - Linear Darcy's Law no longer applies



$$Re = \frac{\rho \cdot q d_{50}}{\mu} = \frac{q d_{50}}{\nu}$$

* Notice that Darcy's Law start to fail when inertial effects are important, even through the flow is still laminar.

Specific Discharge, q

$$Q = -KA \cdot \frac{dh}{de}$$

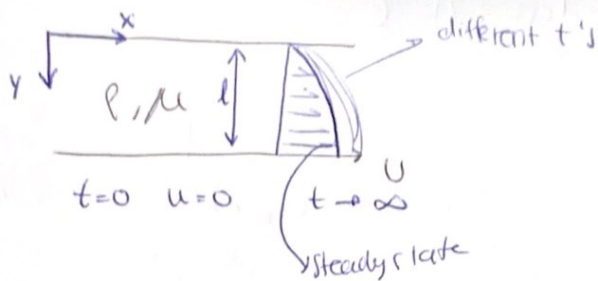
since we want to know under "velocity" ...

Cartagena99

CLASES PARTICULARES, TUTORÍAS TÉCNICAS ONLINE
LLAMA O ENVÍA WHATSAPP: 689 45 44 70

ONLINE PRIVATE LESSONS FOR SCIENCE STUDENTS
CALL OR WHATSAPP: 689 45 44 70

Howk : Problem # 3



Assumptions

- Incompressible
- 1D flow
- Pressure gradient is negligible
- No gravity

Continuity eq : $\frac{\partial \rho}{\partial x} = 0 \quad u(y, t)$

Momentum eq : $\frac{\partial u}{\partial t} = \nu \cdot \frac{\partial^2 u}{\partial y^2}$

Superposition principle :

$$\frac{0}{u(y, t)} \rightarrow u = \frac{0}{u_y(y)} \rightarrow u + \frac{0}{u_t(y, t)}$$

$$u(y, t) = u_y + u_t$$

Boundary conditions

$$\begin{cases} u(0, t) = 0 \\ u(-l, t) = U \\ u(y, 0) = 0 \end{cases}$$

u_y the boundary conditions (steady state)

$$\begin{aligned} u_y(0) &= 0 \\ u_y(-l) &= U \end{aligned}$$

$$\boxed{u_y = -\frac{U}{l} y}$$

$u_t(y, t)$ BC's

$$u_t(0, 0) = u_y(0) + u_t(0, 0) = 0 \quad ; \quad u_t(0, t) = 0$$

$$u_t(-l, t) = u = \underbrace{u_y(-l)}_{"u"} + u_t(-l, t) \quad ; \quad u_t(-l, t) = 0$$

Initial condition :

$$u(y, 0) = u_y(y, 0) + u_t(y, 0) = 0 \quad ; \quad \boxed{u_t(y, 0) = -u_y(y)}$$

Cartagena99

CLASES PARTICULARES, TUTORÍAS TÉCNICAS ONLINE
LLAMA O ENVÍA WHATSAPP: 689 45 44 70

ONLINE PRIVATE LESSONS FOR SCIENCE STUDENTS
CALL OR WHATSAPP: 689 45 44 70

$$\begin{cases} \Gamma_{(t)} - \frac{\lambda^2}{e^2} \nu \Gamma_{(t)} = 0 & \Rightarrow \Gamma_{(t)} = A \cdot e^{\left(\frac{\lambda^2}{e^2} \cdot \nu \cdot t\right)} \\ Y_{(y)} - \frac{\lambda^2}{e^2} \cdot Y_{(y)} = 0 \end{cases}$$

resolución de una función

$$\zeta^2 = a\zeta + b = 0$$

$$\zeta_1 = \frac{-a + \sqrt{a^2 - 4b}}{2} = \frac{+\lambda}{e}$$

$$\zeta_2 = \frac{-a - \sqrt{a^2 - 4b}}{2} = \frac{-\lambda}{e}$$

$$Y(y) = B \cdot \cos\left(\frac{\lambda}{e} y\right) + C \cdot \sin\left(\frac{\lambda}{e} y\right)$$

esto es repaso de ecuaciones diferenciales!!

Analizamos:

$$\Gamma_{(t)} = A \cdot e^{\left(\frac{\lambda^2}{e^2} \nu t\right)} \left\{ \begin{array}{l} \lambda^2 < 0 \quad \checkmark \\ \lambda^2 = 0 \quad \times \rightarrow \\ \lambda^2 > 0 \quad \times \rightarrow \end{array} \right. \left. \begin{array}{l} \\ \\ \end{array} \right\} \text{no son válidos para este problema.}$$

así es como descubrimos que λ es negativo.

entonces

$$\zeta^2 = a\zeta + b = 0$$

$$\zeta_1 = \frac{-a + \sqrt{a^2 - 4b}}{2} = \frac{+\lambda}{e} i$$

$$\zeta_2 = \frac{-a - \sqrt{a^2 - 4b}}{2} = \frac{-\lambda}{e} i$$

complejo y es negativo.

$$Y(y) = B \cdot \cos\left(\frac{\lambda^2 y}{e^2}\right) + C \cdot \sin\left(\frac{\lambda^2 y}{e^2}\right)$$

Volvemos a que:

$$\left[U(y, t) = -\frac{U}{e} y + A e^{\left(\frac{-\lambda^2 \cdot \nu \cdot t}{e^2}\right)} \left[B \cdot \cos\left(\frac{\lambda^2 y}{e^2}\right) + C \cdot \sin\left(\frac{\lambda^2 y}{e^2}\right) \right] \right]$$

esta es la solución Steady

Bound

Cartagena99

CLASES PARTICULARES, TUTORÍAS TÉCNICAS ONLINE
LLAMA O ENVÍA WHATSAPP: 689 45 44 70

ONLINE PRIVATE LESSONS FOR SCIENCE STUDENTS
CALL OR WHATSAPP: 689 45 44 70

Initial conditions :

$$U_f(y, 0) = A_n \cdot \sin\left(\frac{n\pi y}{l}\right) = U_y(y) = -\frac{Uy}{l}$$

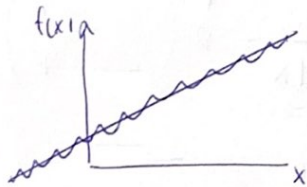
entonces, al igualarlas:

$$A_n \cdot \sin\left(\frac{n\pi \cdot y}{l}\right) = -\frac{Uy}{l}$$

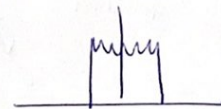
Esto es una serie de Fourier, con la forma: $f(x) = A_0 + \sum A_n \cos x + \sum B_n \sin x$
 en nuestro caso $A_0 = 0$ y $\sum A_n \cos x = 0$, así que tiene la forma:

$$f(x) = \sum B_n \cdot \sin(x)$$

Para poder aproximarla, lo hacemos a través de una sinusoidal.



ó en un pulso



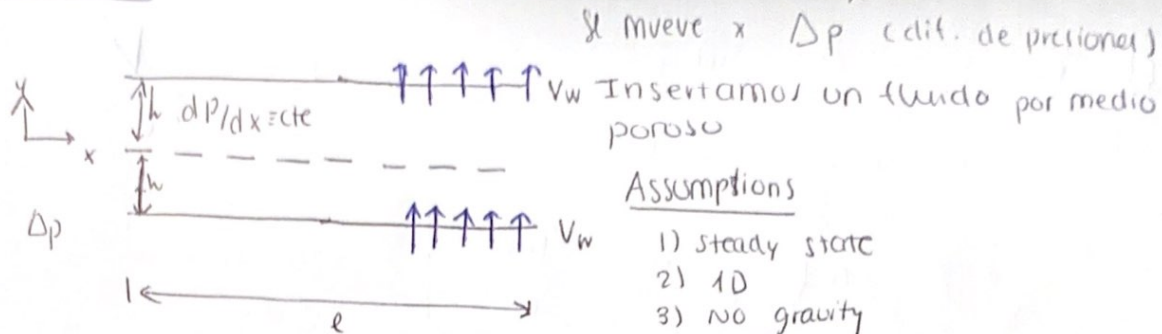
Para hallar los coeficientes de la serie:

$$A_n = \frac{-2}{l} \int_0^l \frac{U}{l} y \cdot \sin\left(\frac{n\pi y}{l}\right) dy$$

$$U(y, t) = -\frac{U}{l} y - \frac{2U}{\pi} \sum_{n=1}^{\infty} e^{-\left(\frac{n\pi}{l}\right)^2 \cdot t} \cdot \frac{(-1)^n}{n\pi} \cdot \sin\left(\frac{n\pi y}{l}\right)$$

Example (POROUS MEDIA)

$\Delta P = P_2 - P_1$



Assumptions

- 1) steady state
- 2) 1D
- 3) no gravity
- 4) Incompressible
- 5) v_w constant
- 6) No heat transfer

Solution

continuity eq: $\frac{\partial u}{\partial x} + \frac{\partial v}{\partial y} = 0$; $\frac{\partial u}{\partial x} = f(y)$

Momentum equation:

x - component:

$$\frac{\partial u}{\partial t} + u \cdot \frac{\partial u}{\partial x} + v \cdot \frac{\partial u}{\partial y} = -\frac{\partial P}{\partial x} + \nu \left(\frac{\partial^2 u}{\partial x^2} + \frac{\partial^2 u}{\partial y^2} \right)$$

$$\frac{\partial^2 u}{\partial y^2} - \frac{v_w}{\nu} \cdot \frac{du}{dy} - \frac{1}{\mu} \cdot \frac{dP}{dx} = 0$$

$(\lambda^2 + a\lambda + b = 0)$

$u(y) = C_1 \cdot e^{\lambda_1 y} + C_2 \cdot e^{\lambda_2 y}$

donde $\lambda_{1,2} = \frac{v_w}{\nu} \pm \sqrt{\frac{v_w^2}{\nu^2} - 4 \cdot \frac{1}{\mu} \cdot \frac{\partial P}{\partial x}}$

Boundary conditions

$y(h) : u(h) = 0$

$y(-h) : u(-h) = 0$

$u(y) = -\frac{h^2}{2\mu} \cdot \frac{dP}{dx} \left[\left(\frac{y}{h} - 1 \right) + \frac{e^{Re} - e^{-\frac{Re y}{h}}}{\sinh(Re)} \right]$ SOLUCIÓN ES. MEDIO POROSO.

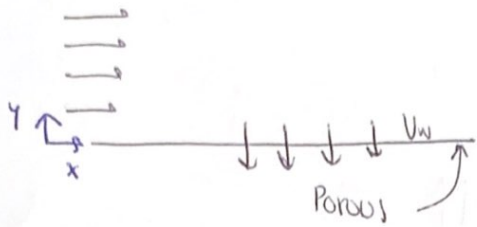
$\frac{dP}{dx} = cte$ } un sist sin medio poroso



CLASES PARTICULARES, TUTORÍAS TÉCNICAS ONLINE
LLAMA O ENVÍA WHATSAPP: 689 45 44 70

ONLINE PRIVATE LESSONS FOR SCIENCE STUDENTS
CALL OR WHATSAPP: 689 45 44 70

Ejemplo: Tenemos una placa porosa que está succionando
 No hay DP



$$\frac{\partial^2 u}{\partial y^2} - \frac{v_w}{\nu} \cdot \frac{du}{dy} = 0$$

$$y=0 : u(0) = 0$$

$$y=\infty : u(\infty) = U_\infty$$

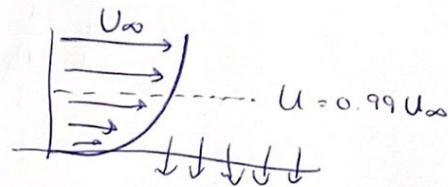
donde $\lambda^2 + a\lambda + b = 0$ donde $\begin{cases} \lambda^2 = \frac{\partial^2 u}{\partial y^2} \\ a\lambda = -\frac{v_w}{\nu} \cdot \frac{du}{dy} \end{cases}$

Boundary conditions:

$$u(y) = U_\infty (1 - e^{-\frac{v_w}{\nu} y})$$

$$u(y) = 0.99 \cdot U_\infty$$

$$y = \left[\delta = -4.6 \frac{\nu}{v_w} \right]$$



* En el caso de un medio No poroso

Laminar:

$$\delta = \frac{5 \cdot y}{\sqrt{Re}} = 7 \text{ mm}$$

Thickness de la capa límite ↓ viscosidad

$v_w = -1 \text{ cm/s}$, $T = 20^\circ\text{C}$

$$\delta = 0.0149$$

* El tema este de succión (medio poroso) es pq tiene que ver con capas límite y entrada en pérdida, por eso la estudiamos.

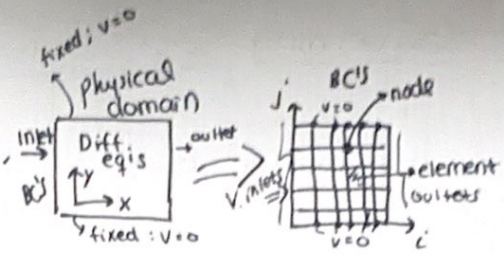
Cartagena99

CLASES PARTICULARES, TUTORÍAS TÉCNICAS ONLINE
 LLAMA O ENVÍA WHATSAPP: 689 45 44 70

ONLINE PRIVATE LESSONS FOR SCIENCE STUDENTS
 CALL OR WHATSAPP: 689 45 44 70

COMPUTATION FLUID DYNAMICS

In fluids I we had a physical domain that had boundary conditions and was solved by differential equations.



In CFD instead of solving the diff. eq's in an analytical way, we discretize the domain to solve the diff. eq's in the nodes.

The other way of solving for fluids is through experiments.

We can use 3 different methods to solve for fluid dynamics:

Analytical / CFD / Experimental

We can also combine them.

CFD can obtain closer to reality (experiment) solution than analytically, and it's cheaper than the experimental way.

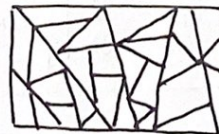
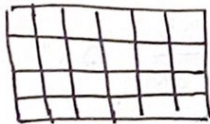
* Mesh: is the combination of the cells used to conduct an analysis, that come from splitting the solution domain into multiple sub-domain (called cells) in the computational structure.

Two types of mesh:

Structured Mesh

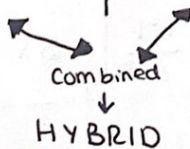
or

Unstructured Mesh



A structured grid has two possible element choices: 2D - Quadrilateral & 3D - hexahedra. This model is highly space efficient since the neighborhood relationships are defined by storage arrangement.

is identified by irregular connectivity, it cannot be easily expressed as a 2D or 3D array in computer memory.



It integrates the

CLASES PARTICULARES, TUTORÍAS TÉCNICAS ONLINE
LLAMA O ENVÍA WHATSAPP: 689 45 44 70

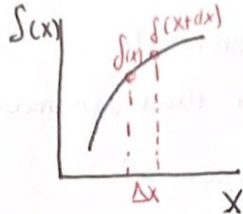
ONLINE PRIVATE LESSONS FOR SCIENCE STUDENTS
CALL OR WHATSAPP: 689 45 44 70

Cartagena99

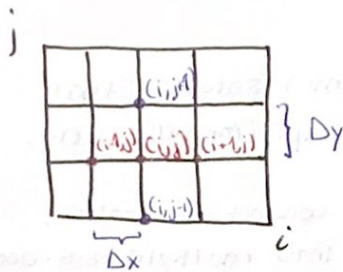
Governing eq's in CFD

• Continuity eq's : $\frac{\partial u}{\partial x} + \frac{\partial v}{\partial y} = 0$ (Incompressible)

• Momentum eq : $\frac{\partial u}{\partial t} + u \cdot \frac{\partial u}{\partial x} + v \cdot \frac{\partial u}{\partial y} = -\frac{\partial P}{\rho \cdot \Delta x} + g_x + \mu \left(\frac{\partial^2 u}{\partial x^2} + \frac{\partial^2 u}{\partial y^2} \right)$



Taylor series expansion



x Taylor series expansion (forward)

$$f_{i+1,j} = f_{i,j} + \frac{\partial f}{\partial x} \Big|_{ij} \Delta x + \frac{1}{2} \frac{\partial^2 f}{\partial x^2} \Big|_{ij} \Delta x^2 + \frac{1}{6} \frac{\partial^3 f}{\partial x^3} \Big|_{ij} \Delta x^3 \equiv$$

$$\frac{f_{i+1,j} - f_{i,j}}{\Delta x} = \frac{\partial f}{\partial x} \Big|_{ij} + \frac{\text{order}(\Delta x)}{\Delta x} \text{ first order approximation.}$$

this is my first derivative.

x Taylor series expansion (backward)

$$f_{i-1,j} = f_{i,j} - \frac{\partial f}{\partial x} \Big|_{ij} \Delta x + \frac{1}{2} \frac{\partial^2 f}{\partial x^2} \Big|_{ij} \Delta x^2 - \frac{1}{6} \frac{\partial^3 f}{\partial x^3} \Big|_{ij} \Delta x^3$$

$$\frac{f_{i,j} - f_{i-1,j}}{\Delta x} = \frac{\partial f}{\partial x} \Big|_{ij} + O(\Delta x) \text{ first order accuracy.}$$

x Second derivative . (forward + backward) approximation

$$f_{i+1,j} + f_{i-1,j} = 2f_{i,j} + \frac{\partial^2 f}{\partial x^2} \Big|_{ij} \Delta x^2 + O(\Delta x^4)$$

$$\frac{f_{i+1,j} + f_{i-1,j} - 2f_{i,j}}{\Delta x^2} = \frac{\partial^2 f}{\partial x^2} \Big|_{ij} + O(\Delta x^2)$$

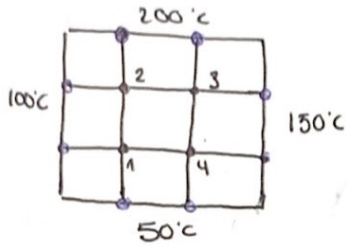
CLASES PARTICULARES, TUTORÍAS TÉCNICAS ONLINE
LLAMA O ENVÍA WHATSAPP: 689 45 44 70

ONLINE PRIVATE LESSONS FOR SCIENCE STUDENTS
CALL OR WHATSAPP: 689 45 44 70

Cartagena99

$$\frac{f_{i+1,j} - 2f_{i,j} + f_{i-1,j}}{\Delta x^2} = \frac{\partial^2 f}{\partial x^2} \Big|_{ij} + O(\Delta x^2) \text{ this is a second order approximation}$$

Ejemplo CFD :



It is a plate with thermal conductivity that is constant, (k) and no source of heat.

We use the Energy equation:

$$k \left(\frac{\partial^2 T}{\partial x^2} + \frac{\partial^2 T}{\partial y^2} \right) = 0 \quad \text{where } T = \text{temperature}$$

$$\boxed{\frac{\partial^2 T}{\partial x^2} + \frac{\partial^2 T}{\partial y^2} = 0} \quad \text{da Place eq } \Rightarrow \text{heat transfer.}$$

$$\left\{ \begin{array}{l} \begin{array}{|c|} \hline 200 \\ \hline 100 \quad \square \quad 150 \\ \hline 50 \end{array} = 100 \begin{array}{|c|} \hline 0 \\ \hline \square \quad 0 \\ \hline 0 \end{array} + 0 \begin{array}{|c|} \hline 200 \\ \hline \square \quad 0 \\ \hline 0 \end{array} + 0 \begin{array}{|c|} \hline 0 \\ \hline \square \quad 150 \\ \hline 0 \end{array} + 0 \begin{array}{|c|} \hline 0 \\ \hline \square \quad 0 \\ \hline 50 \end{array} \end{array} \right\}$$

$$\circ \frac{\partial^2 T}{\partial x^2} = \frac{T_{i+1,j} + T_{i-1,j} - 2T_{i,j}}{\Delta x^2}$$

$$\circ \frac{\partial^2 T}{\partial y^2} = \frac{T_{i,j+1} + T_{i,j-1} - 2T_{i,j}}{\Delta y^2}$$

therefore :

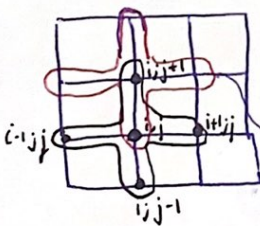
$$\frac{T_{i+1,j} + T_{i-1,j} - 2T_{i,j}}{\Delta x^2} + \frac{T_{i,j+1} + T_{i,j-1} - 2T_{i,j}}{\Delta y^2} = 0$$

and:

$$T_{i,j} = \left(\frac{\Delta x^2}{\Delta y^2} \right) \cdot \frac{1}{4} \left(T_{i+1,j} + T_{i-1,j} + T_{i,j+1} + T_{i,j-1} \right)$$

$\Delta x = \Delta y$

Locating our i 's and j 's in the plate:



for example we can choose any node, but we could also place it in another node that will give us the info we need.

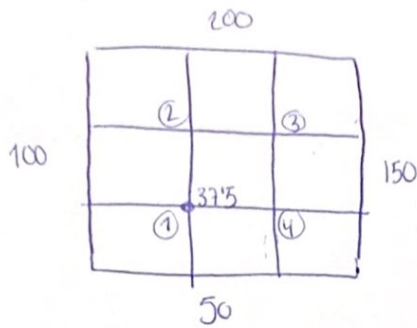
For example, fixing at node 1 where i,j : $T_{01} = 100^\circ\text{C}$

**CLASES PARTICULARES, TUTORÍAS TÉCNICAS ONLINE
LLAMA O ENVÍA WHATSAPP: 689 45 44 70**

**ONLINE PRIVATE LESSONS FOR SCIENCE STUDENTS
CALL OR WHATSAPP: 689 45 44 70**

$$T_{21} = \frac{0 + 150 + 50 + 0}{4} = 50^\circ\text{C} \quad | \text{ que los q no están en el borde son } T=0.$$

Hacemos una segunda vuelta, ahora sí teniendo en cuenta las temperaturas halladas en los nodos del interior, comentando por el (1)



For node 11: $T_{11} = 37.5 \text{ } ^\circ\text{C}$

then node 12: $T_{12} = \frac{37.5 + 100 + 200 + 87.5}{4} = 106.25$

then node 22

$$T_{22} = \frac{200 + 150 + (50) + (T_{12})}{4} = 118.75$$

then node 21

$$T_{21} = \frac{150 + 50 + 37.5 + (T_{22})}{4} = 21.75$$

+ Governing equations in CFD

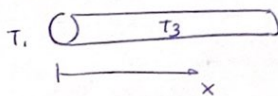
• Energy eq's :

$$C_p \cdot \rho \left(\frac{\partial T}{\partial t} + u \frac{\partial T}{\partial x} + v \frac{\partial T}{\partial y} \right) = k \left(\frac{\partial^2 T}{\partial x^2} + \frac{\partial^2 T}{\partial y^2} \right) + \Phi$$

$$\frac{\partial T}{\partial t} = \frac{k}{\rho C_p} \left(\frac{\partial^2 T}{\partial x^2} + \frac{\partial^2 T}{\partial y^2} \right)$$

$$\alpha = \frac{k}{\rho C_p} \rightarrow \alpha = \text{disipación coeth}$$

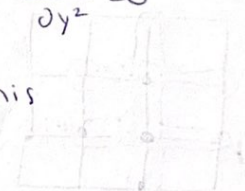
example:



heat transfer is in X axis so:

$$\frac{\partial T}{\partial t} = \frac{k}{\rho C_p} \frac{\partial^2 T}{\partial x^2} \quad \text{bc } \frac{\partial^2 T}{\partial y^2} = 0$$

so $\left[\frac{\partial T}{\partial t} = \alpha \cdot \frac{\partial^2 T}{\partial x^2} \right]$ for cases like this



Cartagena99

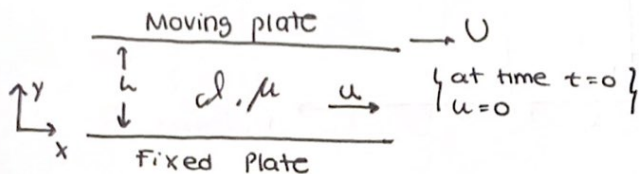
CLASES PARTICULARES, TUTORÍAS TÉCNICAS ONLINE
LLAMA O ENVÍA WHATSAPP: 689 45 44 70

ONLINE PRIVATE LESSONS FOR SCIENCE STUDENTS
CALL OR WHATSAPP: 689 45 44 70

To approximate the diff eq's in CFD (parabolic Partial Diff Eq)

- Explicit Method
- Implicit Method

Considering the example from homework :



this example could be solved analytically, but also as CFD.

1% We take assumptions:

- 1) 1D flow
- 2) Incompressible
- 3) No gravity
- 4) No gradient of pressure
- 5) Newtonian

2% x-component:

$$\left[\frac{\partial u}{\partial t} = \nu \frac{\partial^2 u}{\partial y^2} \right] \text{ this is the diff eq! we need to solve}$$

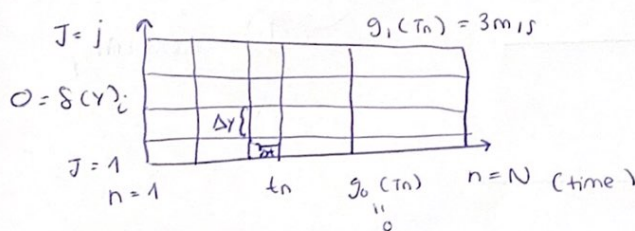
3% Boundary condition (we need the initial cond.) and two B.C.'s

- for $y=0 \rightarrow u(0,t) = 0$
- for $y=h \rightarrow u(h,t) = 3 \text{ m/s}$

4% Initial condition ($t=0$)

$$u(y,0) = 0$$

5% we draw the domain:



Forward:

$$u(y,t) = \frac{\partial u}{\partial t} = \frac{u_j^{n+1} - u_j^{(n)}}{\Delta t} \text{ Explicit mode}$$

$$\frac{\partial^2 u}{\partial y^2} = \frac{u_{j+1}^{(n)} + u_{j-1}^{(n)} - 2u_j^{(n)}}{\Delta y^2}$$

$$\frac{u_j^{n+1} - u_j^n}{\Delta t} = \nu \left(\frac{u_{j+1}^n + u_{j-1}^n - 2u_j^n}{\Delta y^2} \right)$$

$$u_j^{n+1} = \frac{\nu \Delta t}{\Delta y^2} (u_{j+1}^n + u_{j-1}^n - 2u_j^n) + u_j^n \text{ where } \lambda = \frac{\nu \Delta t}{\Delta y^2}$$

CLASES PARTICULARES, TUTORÍAS TÉCNICAS ONLINE
LLAMA O ENVÍA WHATSAPP: 689 45 44 70

ONLINE PRIVATE LESSONS FOR SCIENCE STUDENTS
CALL OR WHATSAPP: 689 45 44 70

we continue solving forward

$$U_j^{n+1} = U_j^n + \lambda (U_{j+1}^n + U_{j-1}^n - 2U_j^n)$$

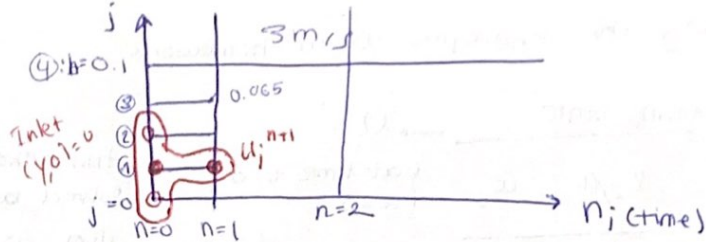
$h = 0.1m$ → separation between two plates

$$U = 3m/s$$

Air:

$$\rho = 1.23 \text{ kg/m}^3$$

$$\mu = 1.789 \cdot 10^{-5} \frac{\text{kg}}{\text{m}\cdot\text{s}}$$



$j=1 ; n=0$ ($\Delta t=1$) where $\Delta y = 0.025$ (we've divided 0.1m in 4)

$$\Delta t = 1 \text{ second (in all cases)}$$

$$\lambda = 0.023$$

$$\text{bc } \lambda = \frac{\Delta t}{(\Delta y)^2}$$

viscosidad cinemática ($\frac{m^2}{s}$)

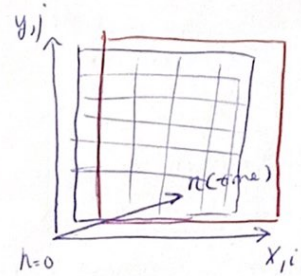
$$U_1^1 = U_1^0 + (0.023) (U_2^0 + U_0^0 - 2U_1^0)$$

$j=2 ; n=0$ ($\Delta t=1$)

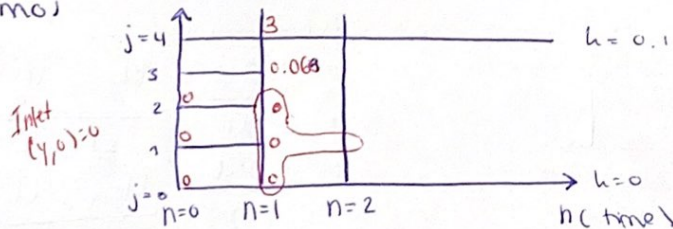
$$U_2^1 = U_2^0 + (0.023) (U_3^0 + U_1^0 - 2U_2^0) = 0$$

$j=3 ; n=0$ ($\Delta t=1$)

$$U_3^1 = U_3^0 + 0.023 (U_4^0 + U_2^0 - 2U_3^0) = 0.069$$



continuamos



$j=1 ; n=1$ ($\Delta t = 1 \text{ sec} \Rightarrow 2 \text{ sec}$)

$$U_1^2 = U_1^1 + 0.023 (U_2^1 + U_0^1 - 2U_1^1) = 0$$

$j=2 ; n=2$ (2 sec)

$$U_2^2 = U_2^1 + 0.023 (U_3^1 + U_1^1 - 2U_2^1)$$

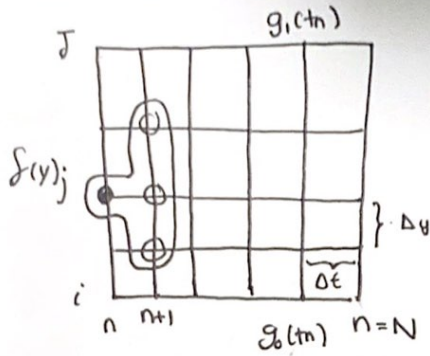
$$U_3^1 = 0.069 m/s$$

Cartagena99

CLASES PARTICULARES, TUTORÍAS TÉCNICAS ONLINE
LLAMA O ENVÍA WHATSAPP: 689 45 44 70

ONLINE PRIVATE LESSONS FOR SCIENCE STUDENTS
CALL OR WHATSAPP: 689 45 44 70

Implicit Method



$$\frac{U_j^{n+1} - U_j^n}{\Delta t} = \frac{\nu (U_{j+1}^{n+1} + U_{j-1}^{n+1} - 2U_j^{n+1})}{(\Delta y)^2}$$

$$U_j^n = -\lambda (U_{j+1}^{n+1} + U_{j-1}^{n+1} - 2U_j^{n+1}) + U_j^{n+1}$$

unconditional stable $\left[\lambda = \frac{\nu \Delta t}{\Delta y^2} \right]$
 $\Delta t \rightarrow \infty$ higher value

Teoría:

CFD . Generación de malla - Calidad de la malla

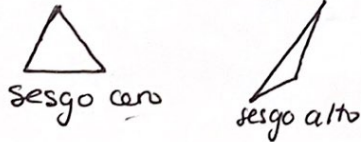
En las capas límite, dd las variables de flujo cambian con rapidez en la dirección normal a la pared y se requieren mallas de alta resolución en la cercanía a esta, las mallas estructuradas permiten una resolución mucho + fina que las no estructuradas.

La calidad de la malla es imprescindible para soluciones confiables de la DFC.

El tipo de sesgo + apropiado para celdas bidimensionales es el sesgo esquinero, definido como:

$$\left[Q_{EAS} = \text{MAX} \left(\frac{\theta_{\text{max}} - \theta_{\text{igual}}}{180^\circ - \theta_{\text{igual}}}, \frac{\theta_{\text{igual}} - \theta_{\text{min}}}{\theta_{\text{igual}}} \right) \right]$$

a) celdas triangulares



b) celdas cuadrilateras



donde:

- θ_{min} = ángulo mínimo (en grados) entre dos lados cualesquiera de la celda
- θ_{max} = ángulo max
- θ_{igual} = ángulo entre dos lados de una celda equilátera ideal con el mismo n° de lados.
- ↳ C triangulares : $\theta_{\text{igual}} = 60^\circ$

Cartagena99

CLASES PARTICULARES, TUTORÍAS TÉCNICAS ONLINE
 LLAMA O ENVÍA WHATSAPP: 689 45 44 70

ONLINE PRIVATE LESSONS FOR SCIENCE STUDENTS
 CALL OR WHATSAPP: 689 45 44 70