



Lógica Secuencial en VHDL (III)

Cartagena99

CLASES PARTICULARES, TUTORÍAS TÉCNICAS ONLINE
LLAMA O ENVÍA WHATSAPP: 689 45 44 70

ONLINE PRIVATE LESSONS FOR SCIENCE STUDENTS
CALL OR WHATSAPP:689 45 44 70

Timing

- Flip-flop samples D at clock edge
- D must be stable when sampled
- Similar to a photograph, D must be stable around clock edge
- If not, metastability can occur

Cartagena99

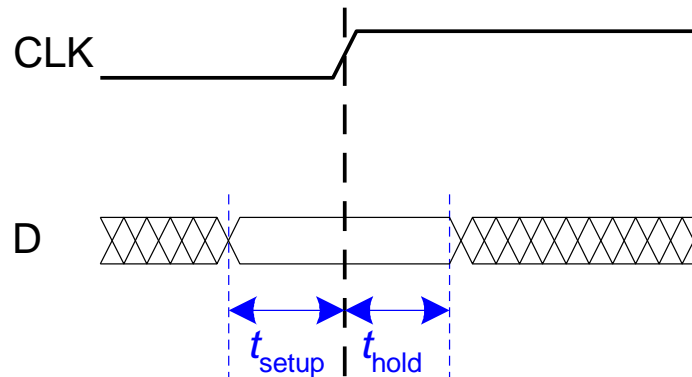
CLASES PARTICULARES, TUTORÍAS TÉCNICAS ONLINE
LLAMA O ENVÍA WHATSAPP: 689 45 44 70

ONLINE PRIVATE LESSONS FOR SCIENCE STUDENTS
CALL OR WHATSAPP:689 45 44 70

NEBRIJA

Input Timing Constraints

- **Setup time:** t_{setup} = time *before* clock edge data must be stable (i.e. not changing)
- **Hold time:** t_{hold} = time *after* clock edge data must be stable
- **Aperture time:** t_a = time *around* clock edge data must be stable ($t_a = t_{\text{setup}} + t_{\text{hold}}$)



Cartagena99

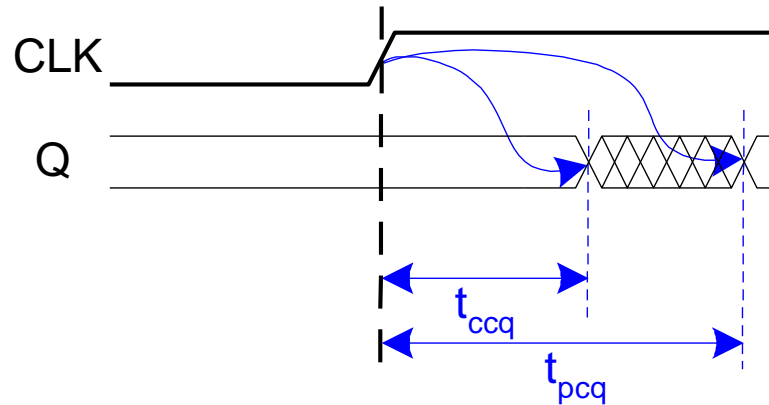
CLASES PARTICULARES, TUTORÍAS TÉCNICAS ONLINE
LLAMA O ENVÍA WHATSAPP: 689 45 44 70

ONLINE PRIVATE LESSONS FOR SCIENCE STUDENTS
CALL OR WHATSAPP:689 45 44 70

NEBRIJA

Output Timing Constraints

- **Propagation delay:** t_{pcq} = time after clock edge that the output Q is guaranteed to be stable (i.e., to stop changing)
- **Contamination delay:** t_{ccq} = time after clock edge that Q might be unstable (i.e., start changing)



Cartagena99

CLASES PARTICULARES, TUTORÍAS TÉCNICAS ONLINE
LLAMA O ENVÍA WHATSAPP: 689 45 44 70

ONLINE PRIVATE LESSONS FOR SCIENCE STUDENTS
CALL OR WHATSAPP: 689 45 44 70

NEBRIJA

Dynamic Discipline

- Synchronous sequential circuit inputs must be stable during aperture (setup and hold) time around clock edge
- Specifically, inputs must be stable
 - at least t_{setup} before the clock edge
 - at least until t_{hold} after the clock edge

Cartagena99

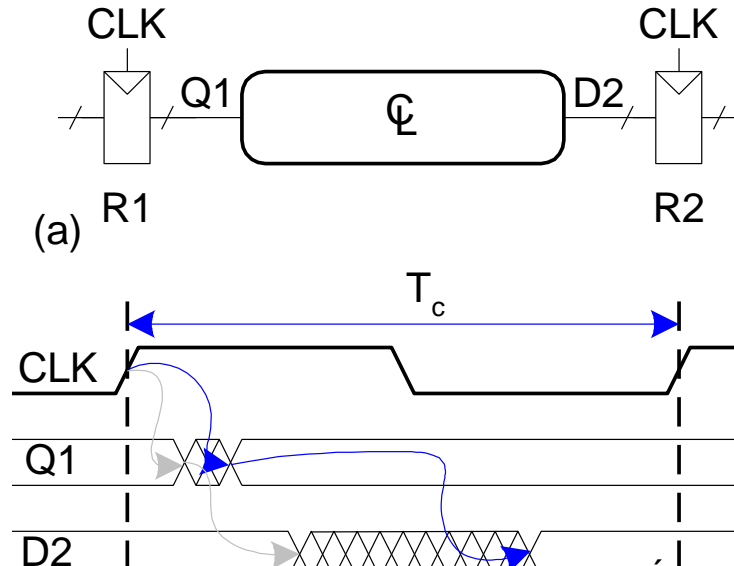
CLASES PARTICULARES, TUTORÍAS TÉCNICAS ONLINE
LLAMA O ENVÍA WHATSAPP: 689 45 44 70

ONLINE PRIVATE LESSONS FOR SCIENCE STUDENTS
CALL OR WHATSAPP: 689 45 44 70

NEBRIJA

Dynamic Discipline

- The delay between registers has a **minimum** and **maximum** delay, dependent on the delays of the circuit elements



CLASES PARTICULARES, TUTORÍAS TÉCNICAS ONLINE
LLAMA O ENVÍA WHATSAPP: 689 45 44 70

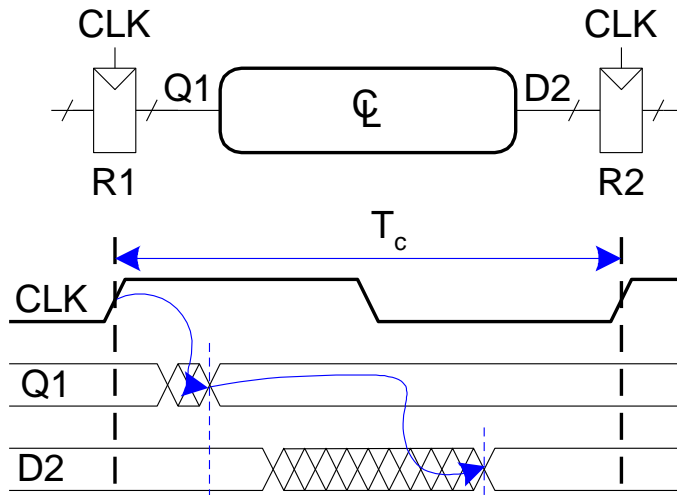
ONLINE PRIVATE LESSONS FOR SCIENCE STUDENTS
CALL OR WHATSAPP:689 45 44 70

Cartagena99

NEBRIJA

Setup Time Constraint

- Depends on the **maximum** delay from register R1 through combinational logic to R2
- The input to register R2 must be stable at least t_{setup} before clock edge



$$T_c \geq t_{pcq} + t_{pd} + t_{\text{setup}}$$
$$t_{pd} \leq T_c - (t_{pcq} + t_{\text{setup}})$$

Cartagena99

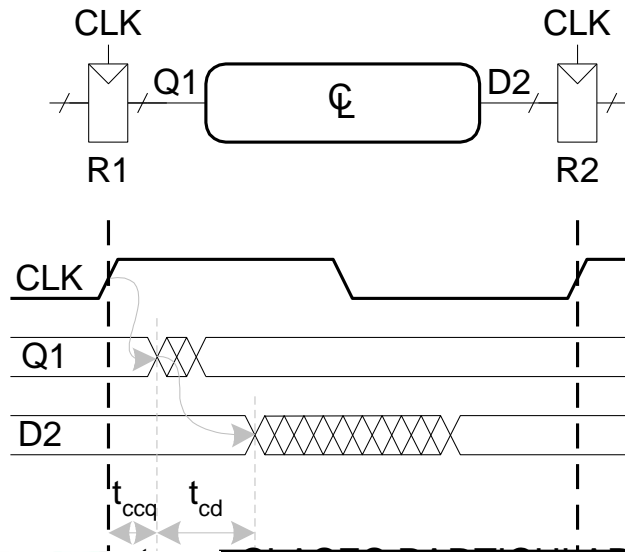
CLASES PARTICULARES, TUTORÍAS TÉCNICAS ONLINE
LLAMA O ENVÍA WHATSAPP: 689 45 44 70

ONLINE PRIVATE LESSONS FOR SCIENCE STUDENTS
CALL OR WHATSAPP: 689 45 44 70

NEBRIJA

Hold Time Constraint

- Depends on the **minimum** delay from register R1 through the combinational logic to R2
- The input to register R2 must be stable for at least t_{hold} after the clock edge



$$t_{\text{hold}} < t_{\text{ccq}} + t_{\text{cd}}$$

$$t_{\text{cd}} > t_{\text{hold}} - t_{\text{ccq}}$$

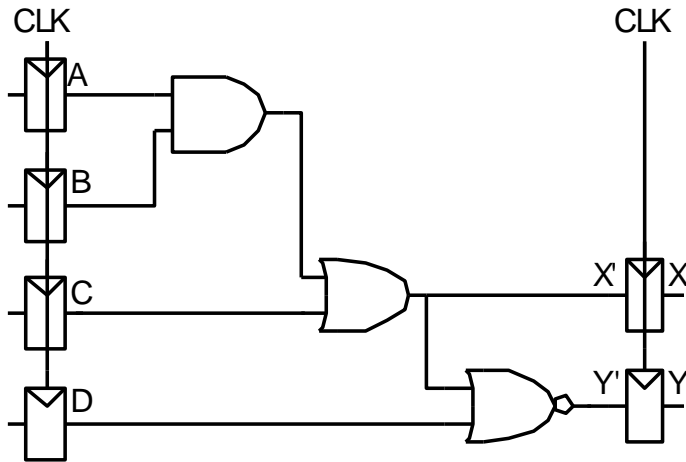
Cartagena99

CLASES PARTICULARES, TUTORÍAS TÉCNICAS ONLINE
LLAMA O ENVÍA WHATSAPP: 689 45 44 70

ONLINE PRIVATE LESSONS FOR SCIENCE STUDENTS
CALL OR WHATSAPP: 689 45 44 70

NEBRIJA

Timing Analysis



Timing Characteristics

$$t_{ccq} = 30 \text{ ps}$$

$$t_{pcq} = 50 \text{ ps}$$

$$t_{setup} = 60 \text{ ps}$$

$$t_{hold} = 70 \text{ ps}$$

per gate

$$t_{pd} = 35 \text{ ps}$$

$$t_{cd} = 25 \text{ ps}$$

$$t_{pd} = 3 \times 35 \text{ ps} = 105 \text{ ps}$$

$$t_{cd} = 25 \text{ ps}$$

Setup time constraint:

$$T_c \geq (50 + 105 + 60) \text{ ps} = 215 \text{ ps}$$

Hold time constraint:

$$t_{prop} + t_{cd} > t_{hold} ?$$

Cartagena99

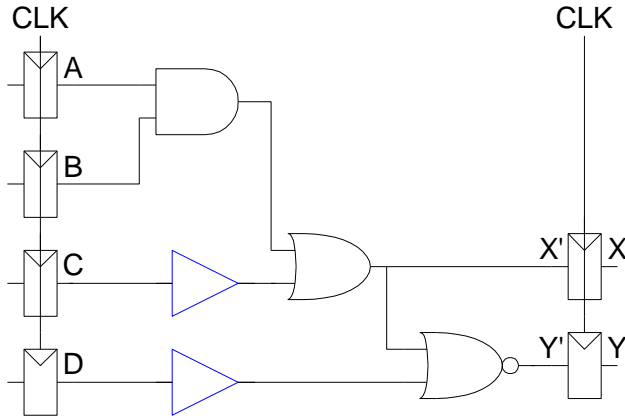
CLASES PARTICULARES, TUTORÍAS TÉCNICAS ONLINE
LLAMA O ENVÍA WHATSAPP: 689 45 44 70

ONLINE PRIVATE LESSONS FOR SCIENCE STUDENTS
CALL OR WHATSAPP:689 45 44 70

NEBRIJA

Timing Analysis

Add buffers to the short paths:



$$t_{pd} = 3 \times 35 \text{ ps} = 105 \text{ ps}$$

$$t_{cd} = 2 \times 25 \text{ ps} = 50 \text{ ps}$$

Setup time constraint:

$$T_r \geq (50 + 105 + 60) \text{ ps} = 215 \text{ ps}$$

Timing Characteristics

$$t_{ccq} = 30 \text{ ps}$$

$$t_{pcq} = 50 \text{ ps}$$

$$t_{setup} = 60 \text{ ps}$$

$$t_{hold} = 70 \text{ ps}$$

$$t_{pd} = 35 \text{ ps}$$

$$\left. \begin{array}{l} t_{cd} \\ \text{per gate} \end{array} \right\} = 25 \text{ ps}$$

Hold time constraint:

$$t_{hold} + t_{pcq} > t_{ccq} + t_{pd} ?$$

Cartagena99

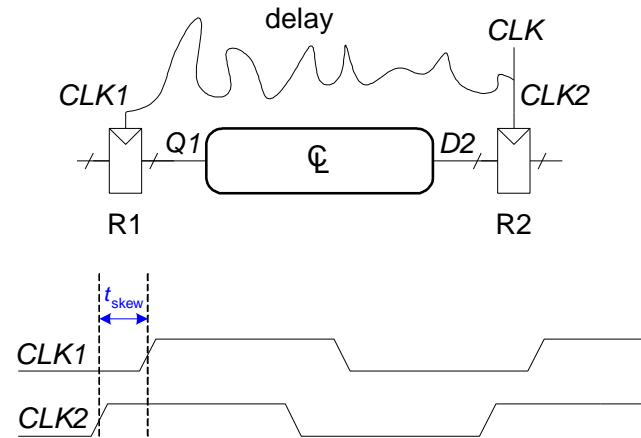
CLASES PARTICULARES, TUTORÍAS TÉCNICAS ONLINE
LLAMA O ENVÍA WHATSAPP: 689 45 44 70

ONLINE PRIVATE LESSONS FOR SCIENCE STUDENTS
CALL OR WHATSAPP: 689 45 44 70

NEBRIJA

Clock Skew

- The clock doesn't arrive at all registers at same time
- **Skew**: difference between two clock edges
- Perform **worst case analysis** to guarantee dynamic discipline is not violated for any register – many registers in a system!



Cartagena99

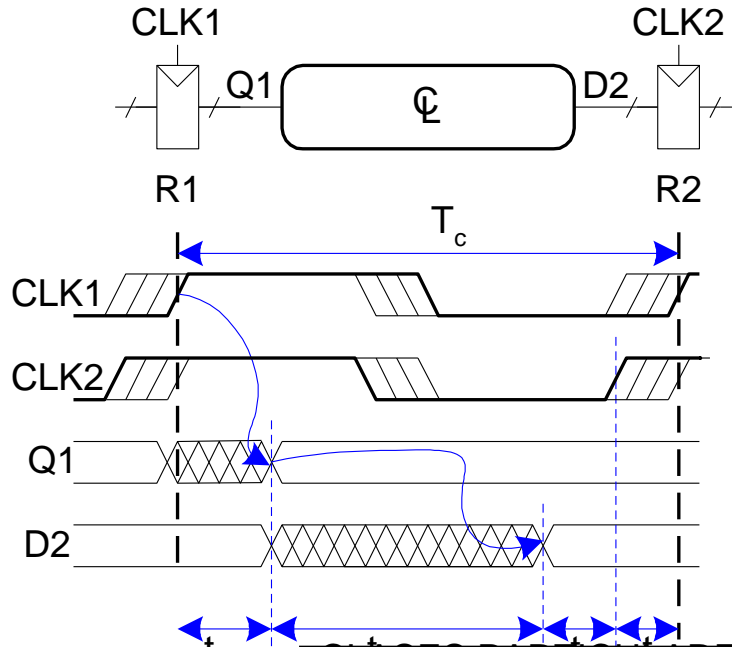
CLASES PARTICULARES, TUTORÍAS TÉCNICAS ONLINE
LLAMA O ENVÍA WHATSAPP: 689 45 44 70

ONLINE PRIVATE LESSONS FOR SCIENCE STUDENTS
CALL OR WHATSAPP:689 45 44 70

NEBRIJA

Setup Time Constraint with Skew

- In the worst case, CLK2 is earlier than CLK1



$$T_c \geq t_{pcq} + t_{pd} + t_{setup} + t_{skew}$$

$$t_{pd} \leq T_c - (t_{pcq} + t_{setup} + t_{skew})$$

Cartagena99

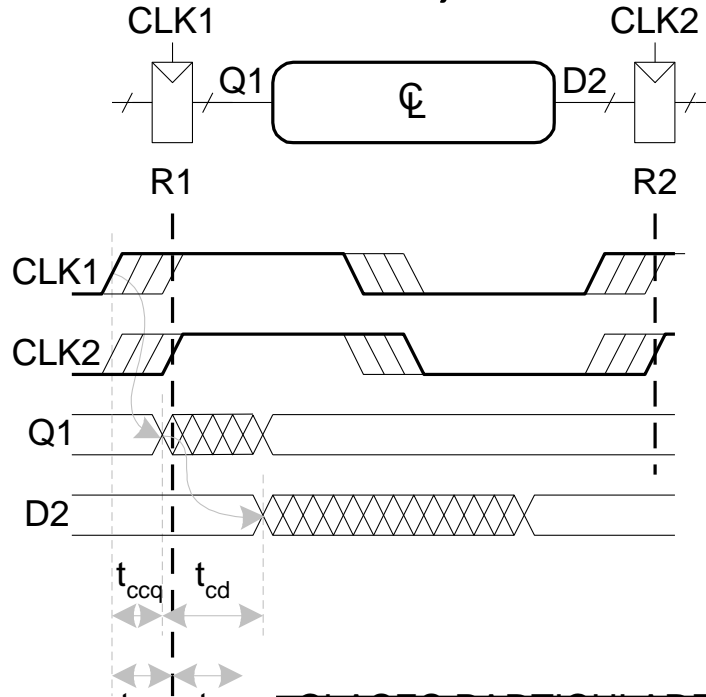
CLASES PARTICULARES, TUTORÍAS TÉCNICAS ONLINE
 LLAMA O ENVÍA WHATSAPP: 689 45 44 70

 ONLINE PRIVATE LESSONS FOR SCIENCE STUDENTS
 CALL OR WHATSAPP:689 45 44 70

NEBRIJA

Hold Time Constraint with Skew

- In the worst case, CLK2 is later than CLK1



$$t_{ccq} + t_{cd} > t_{hold} + t_{skew}$$

$$t_{cd} > t_{hold} + t_{skew} - t_{ccq}$$

Cartagena99

CLASES PARTICULARES, TUTORÍAS TÉCNICAS ONLINE
 LLAMA O ENVÍA WHATSAPP: 689 45 44 70

ONLINE PRIVATE LESSONS FOR SCIENCE STUDENTS
 CALL OR WHATSAPP: 689 45 44 70

NEBRIJA