

Programming

Academic Year: 2021/22

Practical Case

Phase 2: Functions and Data Validation

Content

Introduction	2
Evaluation	2
Delivery	2
Changes with respect to Phase 1	2
Phase 2 Statement	3
Tasks to implement	3
TASK 1: Iteration	3
TASK 2: Data validation	3
TASK 3: Functions	5
Important: Exclusions	6

The logo for Cartagena99 features the text 'Cartagena99' in a stylized, blue, serif font. The '99' is significantly larger and more prominent than the 'Cartagena' part. The text is set against a light blue background with a white shadow effect, and a blue arrow-like shape points upwards from behind the text.

CLASES PARTICULARES, TUTORÍAS TÉCNICAS ONLINE
LLAMA O ENVÍA WHATSAPP: 689 45 44 70

ONLINE PRIVATE LESSONS FOR SCIENCE STUDENTS
CALL OR WHATSAPP:689 45 44 70

1 Introduction

This document contains the statement of the Practical Case: Phase 2, in relation to the topics: functions, data validation and the use of iterative statements. This must be understood as a continuation of the statement for Phase 1, meaning that all information from the statement from Phase 1 is valid for this phase.

1.1 Evaluation

Phase 2 scores for **10% of the total grade** of this course.

The teacher will evaluate the deliverable and publish the grades at the end of the semester. The students can request a revision of the grade after its publication.

1.2 Delivery

The deliverable must be uploaded to Aula Global before the end of **November 14th**.

The deliverable consists of a **single compressed file** (.zip or .rar) with the following documents:

- **Report (2%)**: a report of the practical case in **PDF format**, including the sections described below. **Important**: it is not necessary to include source code in the report, although students can include some code lines in order to explain a fragment of the project itself.
 - Cover: phase of the practical case, students' name, group and course number.
 - Introduction: brief description of the work, adding any specific comments about the practical case.
 - Implementation: for each task to implement, include validation tests to verify that the program always executes correctly (including exceptional cases).
 - Conclusions: about the completeness of the solution provided, as well as comments about the practical case. Students may include personal comments about the current phase, difficulties and problems encountered during the implementation.
- **Source code (8%)**: one or more .py files with the source code that implements the practical case. The code must include program execution examples to confirm the validation tests, including exceptional cases.
 - Note: it is recommended to store all .py files in the same project folder in order to facilitate the delivery of the practical case. That project must be compressed into a .zip or .rar file and uploaded to Aula Global.

1.3 Changes with respect to Phase 1

Unlike Phase 1, in this phase it is mandatory to use loop statements and functions. It is not

CLASES PARTICULARES, TUTORÍAS TÉCNICAS ONLINE
LLAMA O ENVÍA WHATSAPP: 689 45 44 70

ONLINE PRIVATE LESSONS FOR SCIENCE STUDENTS
CALL OR WHATSAPP:689 45 44 70

Cartagena99

2 Phase 2 Statement

Phase 2 adds three main functionalities to the program delivered on Phase 1: iteration in the execution of the program, data validation and use of functions.

2.1 Tasks to implement

The current document shows the tasks to be implemented on Phase 2 of the project, built on top of the previous deliverable. The tasks to implement are the following:

2.1.1 TASK 1: Iteration

Continue using the menu created on Phase 1, as presented on Figure 1.

```
***** MAIN MENU *****
 1. New Lifting Equipment
 2. New client
 3. New Equipment Rental
 4. Exit

Please, enter an option (1-4):
```

Figure 1. Displaying the main menu

However, when the user enters option 1, 2 or 3, the corresponding operations must be executed and the menu **must be displayed again**.

In other words, instead of the program ending after entering any of the options, the program will end only when **option 4 is selected**.

Figure 2 depicts a flow chart diagram of the program for a better understanding of this task.

2.1.2 TASK 2: Data validation

It is recommended to read the TASK 3 description in the following section before implementing this task, given that both tasks can be performed for options 2 and 3.

On Phase 1 there is a data verification for the Brand of the equipment, which can only be one of three values. If data validation is not implemented, it can cause data inconsistency on the equipment information.

Another example can be when a user is asked to enter their DNI (identification number); if the user enters 12345678L a first time, 12.345.678-L the second time, and 12345678-1 on the third time, and the program does not perform any data validation, the system will consider the same person as three different customers.

The logo for Cartagena99 features the word 'Cartagena99' in a stylized, blue, serif font. The '99' is significantly larger and more prominent than the rest of the text. The logo is set against a light blue background with a subtle gradient and a soft shadow effect.

CLASES PARTICULARES, TUTORÍAS TÉCNICAS ONLINE
LLAMA O ENVÍA WHATSAPP: 689 45 44 70

ONLINE PRIVATE LESSONS FOR SCIENCE STUDENTS
CALL OR WHATSAPP:689 45 44 70

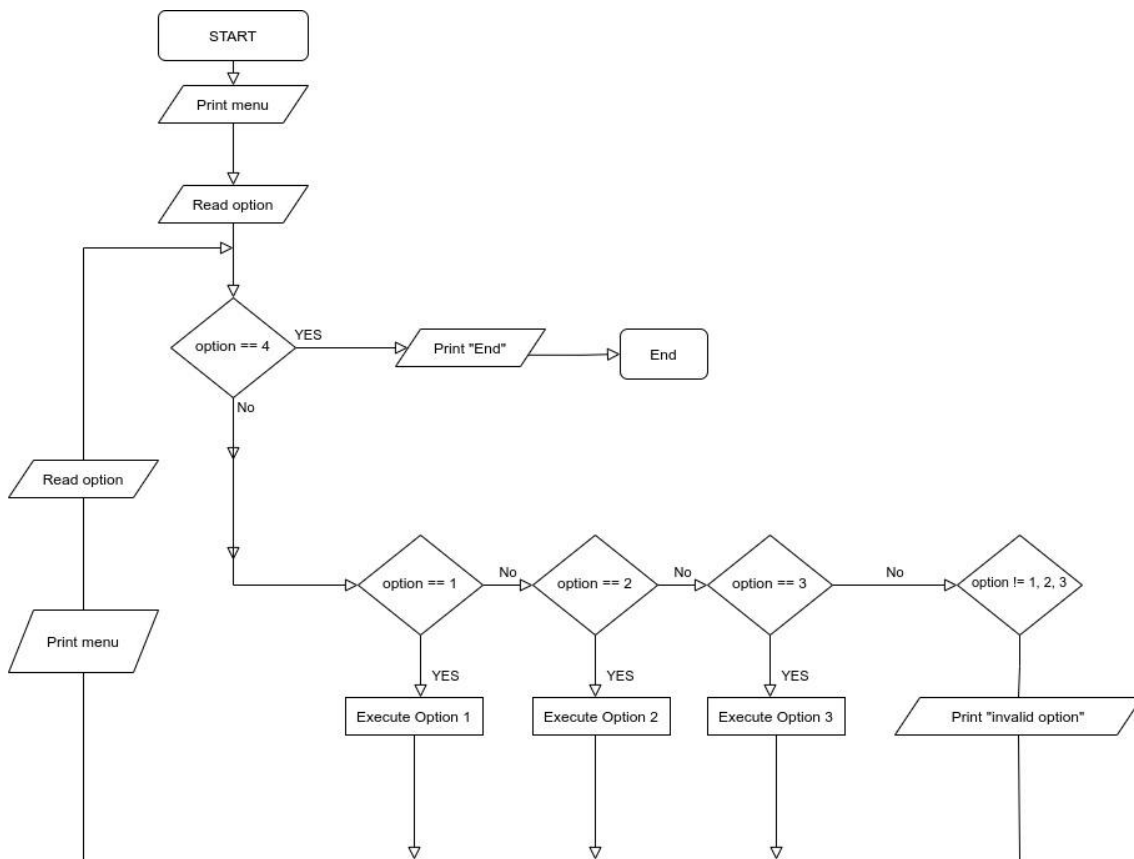


Figure 2. Flow Chart Diagram for the menu

In order to avoid these situations, two tasks must be implemented: normalization of some of the data (like the Brand data on Phase 1); and implementation of the instructions that validate the following:

- The brand must be one of the three previously defined: POLFINGER, KONEG y SMALZ
- The ID of the equipment must be an integer number that, when incorporating a new lifting equipment (option 1 of the menu), the program automatically assigns the next value to the one used for the last equipment (i.e. incremented by 1). Initially, this value will be 1, the second product will have an ID of 2, etc.
- Moreover, it is important to verify that when the user is asked to enter a number (menu option, prices, etc.), the user can only enter numbers (integer or float)¹.

When creating new clients, the data to be entered by the user is the following:

- First Name
- Last Name

**CLASES PARTICULARES, TUTORÍAS TÉCNICAS ONLINE
LLAMA O ENVÍA WHATSAPP: 689 45 44 70**

**ONLINE PRIVATE LESSONS FOR SCIENCE STUDENTS
CALL OR WHATSAPP:689 45 44 70**



- Address
- Phone number: all phone numbers must be stored as integer numbers of 9 digits.

```

Please, enter an option (1-4): 2
NEW CLIENT

Enter the first name of the new client: Pepe

Enter the last name of the new client: Fernandez

Enter the DNI of the new client using the format 'NNNNNNNNL': 6273514H
6273514H is not a valid DNI

Enter the DNI of the new client using the format 'NNNNNNNNL':
31734403S

Enter the address of the new client: Calle Mayor, 1, Madrid

Enter the phone of the new client: 913526271

### CLIENT DATA ###
Name of the client: Pepe Fernandez
DNI: 31734403S
Address of the client: Calle Mayor, 1, Madrid
Phone number of the client: 913526271
    
```

Figure 3. Entering a new client

2.1.3 TASK 3: Functions

As mentioned in the introduction, an important change on Phase 2 is that functions are allowed to be implemented in order to complete the program logic. In Phase 2 some execution tests of the program can be performed with provisional data, until Phase 3 where the data structure will be implemented.

In this task, it is required to implement **at least** the following functions:

- A function that displays the menu and returns the number entered by the user (only valid options).
- A function that executes option 1 (add new lifting equipment). Request the data to the user and validate the data inside the function. It returns the set of data from the new product.
- A function that executes option 2 from the menu (new client). This function must check that the DNI is valid by using the function described above. It returns all of the data from the client as a set.
- A function that requests the user for a floating point number until a valid number is entered.



CLASES PARTICULARES, TUTORÍAS TÉCNICAS ONLINE
 LLAMA O ENVÍA WHATSAPP: 689 45 44 70

ONLINE PRIVATE LESSONS FOR SCIENCE STUDENTS
 CALL OR WHATSAPP:689 45 44 70

```
*** LIFTING EQUIPMENT ***  
ID: 512  
Name: Polfinger Maxi Lifter  
Brand: POLFINGER  
Model: PCC 115.002  
Type: All-terrain crane  
Rental price (without VAT): 12500  
Rental price (with VAT): 14500  
Units available: 4
```

Figure 4. Display data for a lifting equipment

```
*** CLIENT INFORMATION ***  
First name of the client: Pepe  
Last name of the client: Fernandez  
DNI of the client: 31734403S  
Address of the client: Calle Mayor, 1, Madrid  
Phone number of the client: 913526271
```

Figure 5. Display Client information

2.2 Important: Exclusions

Under any circumstance it is allowed to:

- use global variables or constants.
- use external libraries or objects, including complex data types or lists, vectors, dictionaries, sequences, among others.

The logo for Cartagena99 features the text 'Cartagena99' in a stylized, blue, serif font. The '99' is significantly larger and more prominent than the rest of the text. The logo is set against a light blue background with a white starburst shape behind the text.

CLASES PARTICULARES, TUTORÍAS TÉCNICAS ONLINE
LLAMA O ENVÍA WHATSAPP: 689 45 44 70

ONLINE PRIVATE LESSONS FOR SCIENCE STUDENTS
CALL OR WHATSAPP:689 45 44 70