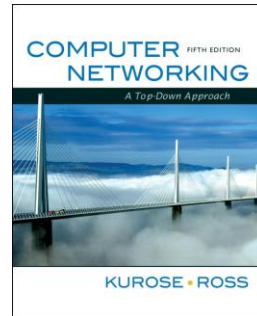


RSC

Part I: Introduction



Redes y Servicios de Comunicaciones Universidad Carlos III de Madrid

These slides are, mainly, part of the companion slides to the book "Computer Networking: A Top Down Approach" generously made available by their authors (see copyright below). The slides have been adapted, where required, to the teaching needs of the subject above.

All material copyright 1996-2009
J.F Kurose and K.W. Ross, All Rights Reserved






*Computer Networking:
A Top Down Approach
5th edition.*

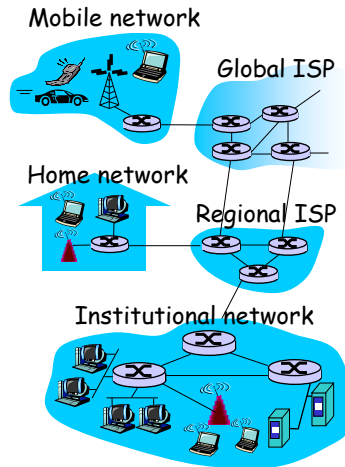
Jim Kurose, Keith Ross
Addison-Wesley, April
2009.

RSC Part I: Introduction

- ❑ Circuit switching vs packet switching
- ❑ Protocols and protocols stacks
- ❑ What is the Internet
- ❑ Network structure
- ❑ ISPs and Internet Backbones

What's the Internet: "nuts and bolts" view

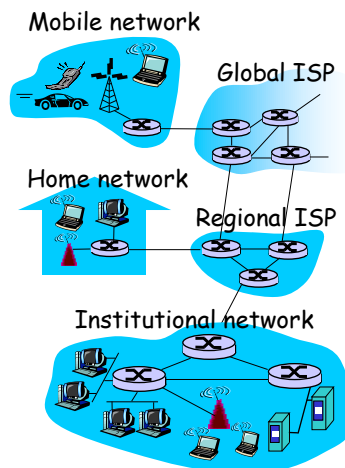
-  PC
 - millions of connected computing devices: *hosts = end systems*
 - ❖ running *network apps*
-  server
 - *communication links*
 - ❖ fiber, copper, radio, satellite
 - ❖ transmission rate = *bandwidth*
-  wireless laptop
 - *routers*: forward packets (chunks of data)
-  cellular handheld
 - ❖ access points
 - wired links
-  router
 - ❖ fiber, copper, radio, satellite
 - ❖ transmission rate = *bandwidth*



Introduction 1-3

What's the Internet: "nuts and bolts" view

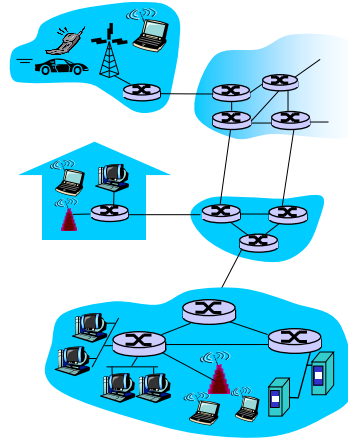
- *protocols* control sending, receiving of msgs
 - ❖ e.g., TCP, IP, HTTP, Skype, Ethernet
- *Internet: "network of networks"*
 - ❖ loosely hierarchical
 - ❖ public Internet versus private intranet
- Internet standards
 - ❖ RFC: Request for comments
 - ❖ IETF: Internet Engineering Task Force



Introduction 1-4

What's the Internet: a service view

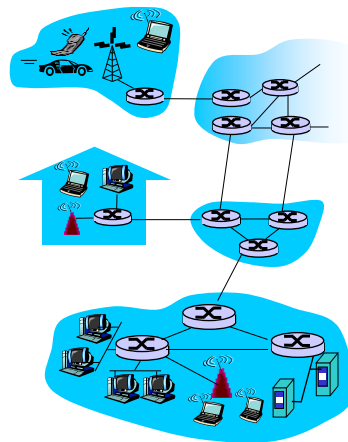
- **communication infrastructure** enables distributed applications:
 - ❖ Web, VoIP, email, games, e-commerce, file sharing
- **communication services provided to apps:**
 - ❖ reliable data delivery from source to destination
 - ❖ "best effort" (unreliable) data delivery



Introduction 1-5

A closer look at network structure:

- **network edge:** applications and hosts
- **access networks, physical media:** wired, wireless communication links
- **network core:**
 - ❖ interconnected routers
 - ❖ network of networks



Introduction 1-6

The network edge:

□ end systems (hosts):

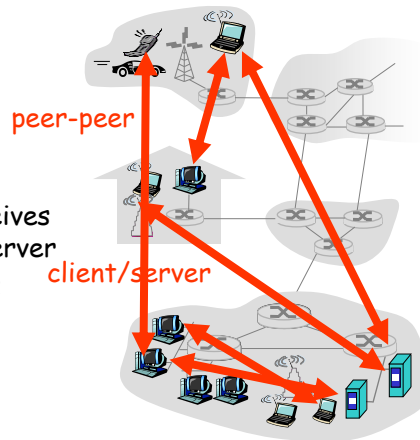
- ❖ run application programs
- ❖ e.g. Web, email
- ❖ at "edge of network"

□ client/server model

- ❖ client host requests, receives service from always-on server
- ❖ e.g. Web browser/server; email client/server

□ peer-peer model:

- ❖ minimal (or no) use of dedicated servers
- ❖ e.g. Skype, BitTorrent



Introduction 1-7

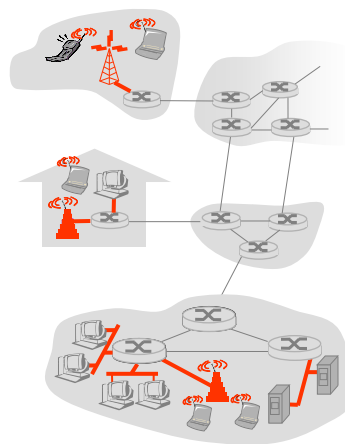
Access networks and physical media

Q: How to connect end systems to edge router?

- residential access nets
- institutional access networks (school, company)
- mobile access networks

Keep in mind:

- bandwidth (bits per second) of access network?
- shared or dedicated?

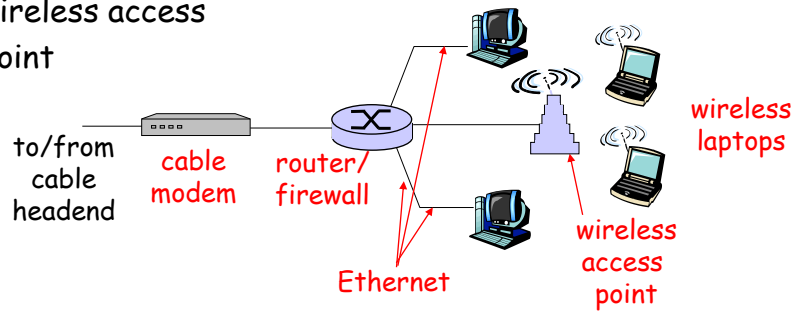


Introduction 1-8

Home networks

Typical home network components:

- ❑ DSL or cable modem
- ❑ router/firewall/NAT
- ❑ Ethernet
- ❑ wireless access point



Introduction 1-9

Internet structure: network of networks

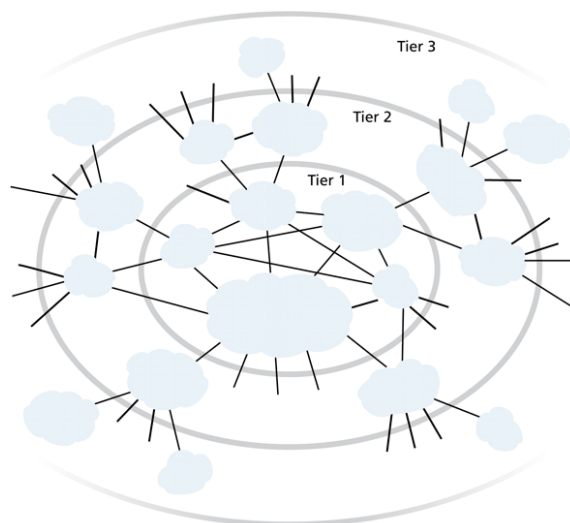
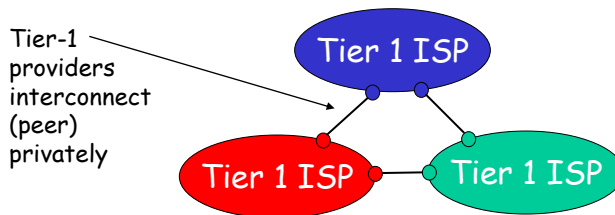


Figure 1.11 ♦ Interconnection of ISPs

Introduction 1-10

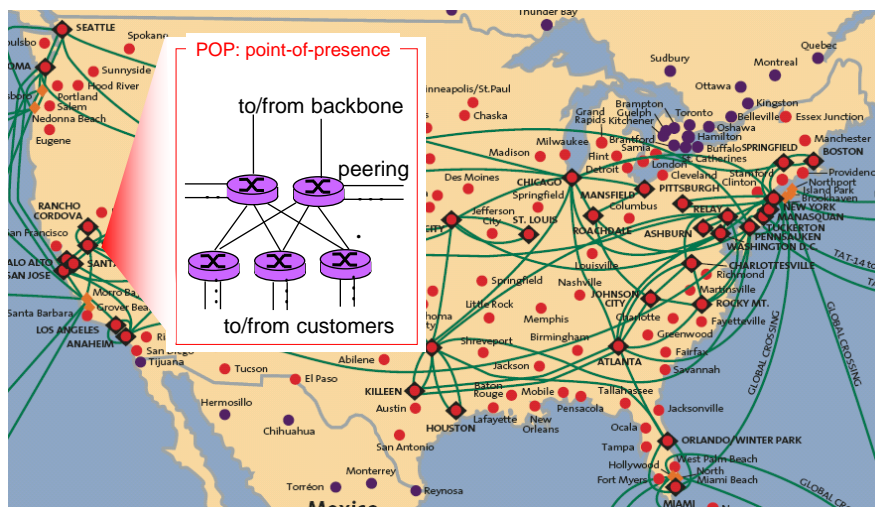
Internet structure: network of networks

- roughly hierarchical
- **at center: "tier-1" ISPs** (e.g., Verizon, Sprint, AT&T, Cable and Wireless), national/international coverage
 - ❖ treat each other as equals



Introduction 1-11

Tier-1 ISP: e.g., Sprint

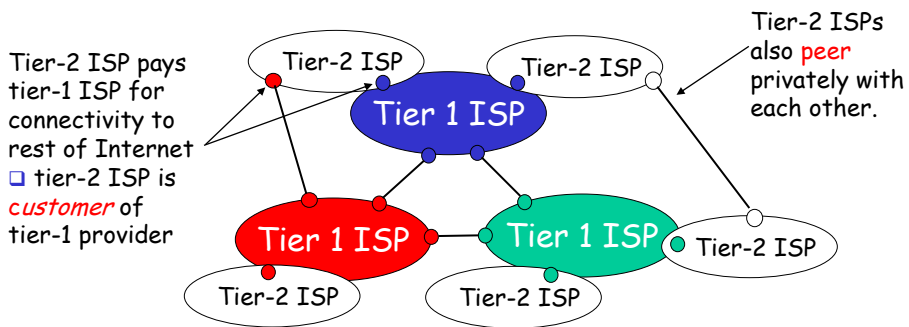


Introduction 1-12

Internet structure: network of networks

□ "Tier-2" ISPs: smaller (often regional) ISPs

- ❖ Connect to one or more tier-1 ISPs, possibly other tier-2 ISPs

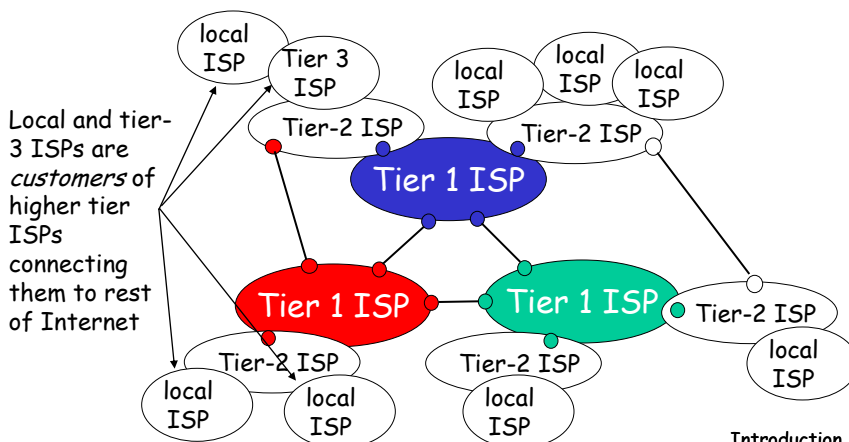


Introduction 1-13

Internet structure: network of networks

□ "Tier-3" ISPs and local ISPs

- ❖ last hop ("access") network (closest to end systems)



Introduction 1-14

Internet structure: network of networks

- a packet passes through many networks!

