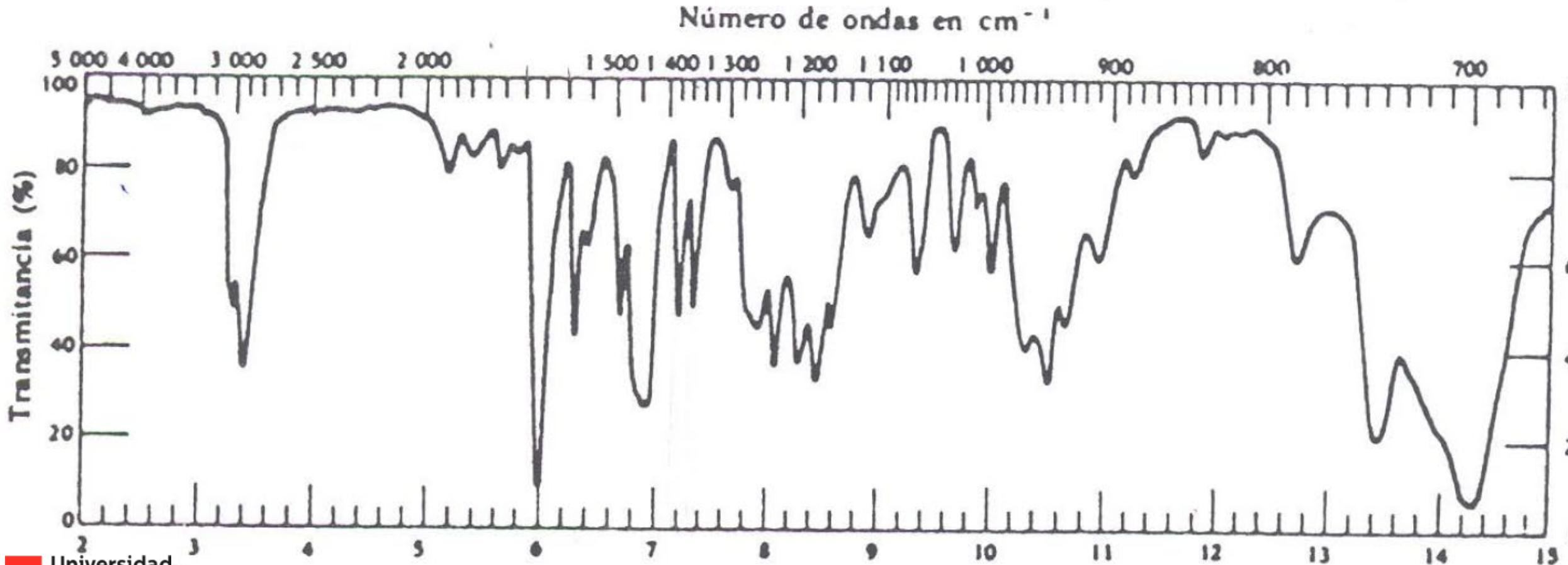
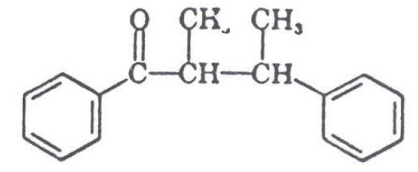
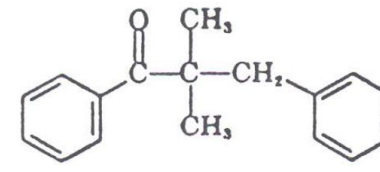
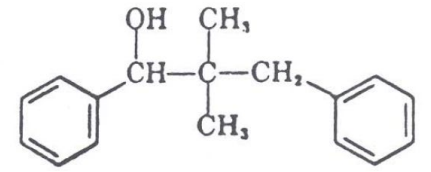
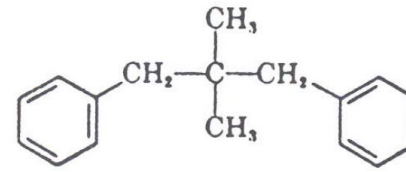


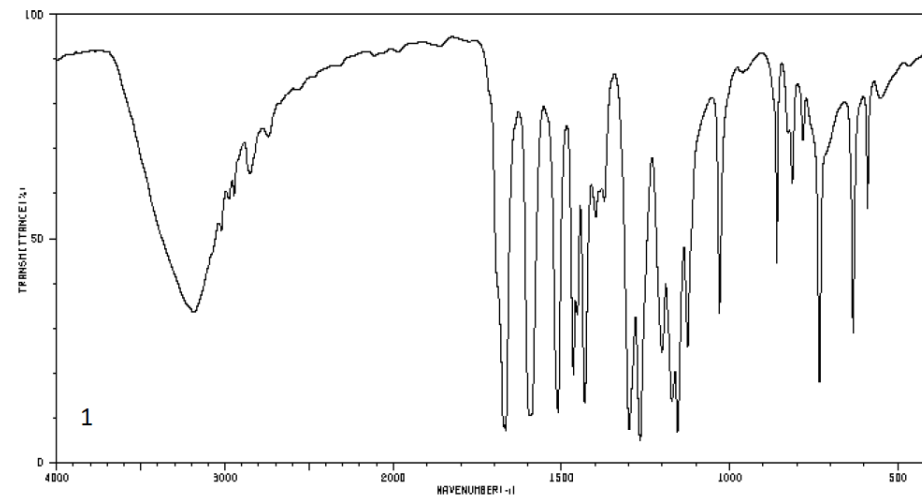
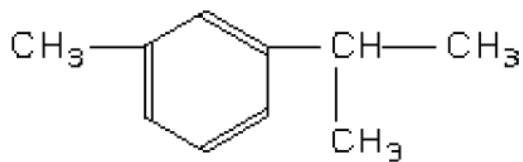
Tema 5. Actividad 2

1º. Indica a cuál de los siguientes compuestos corresponde este espectro

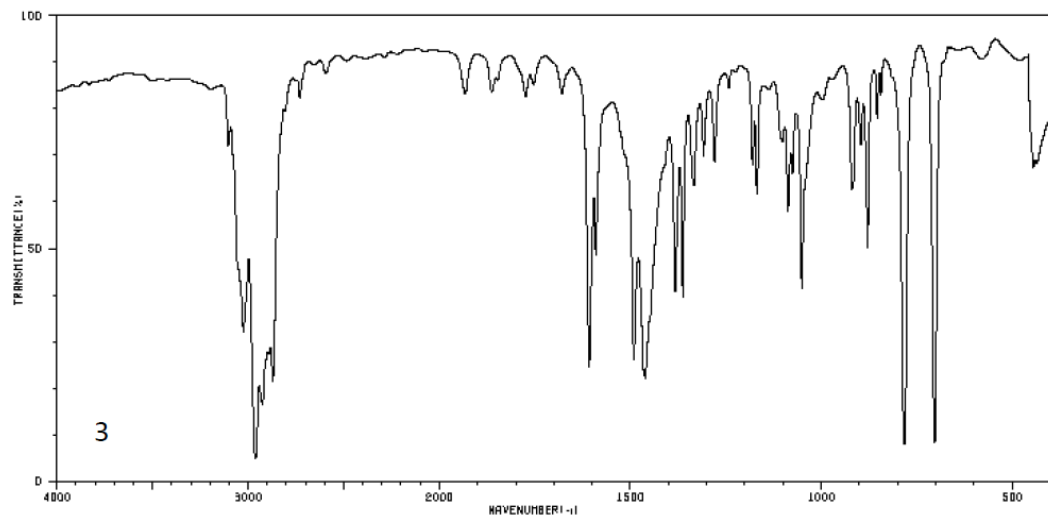
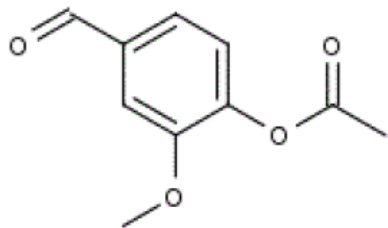


2º. Match the following molecules and IR spectra

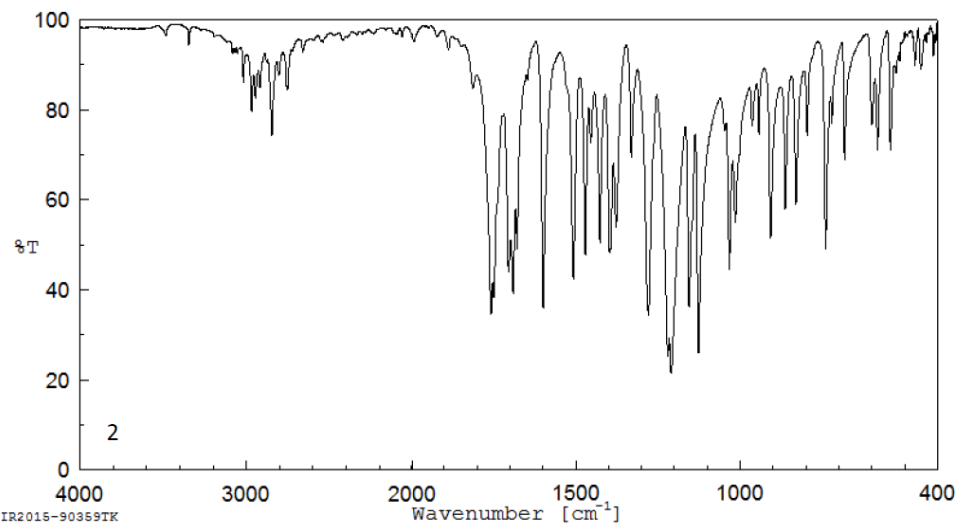
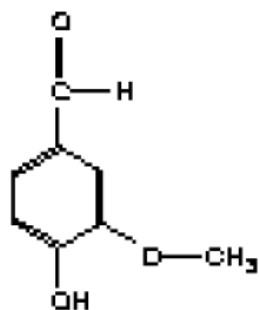
a) m-cymene, $C_{10}H_{14}$



b) Vanillin acetate, $C_{10}H_{10}O_4$

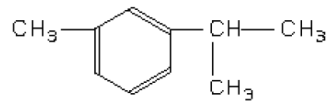


c) Vanillin, $C_8H_8O_3$

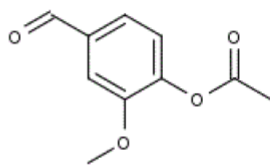


IR2015-90359TK

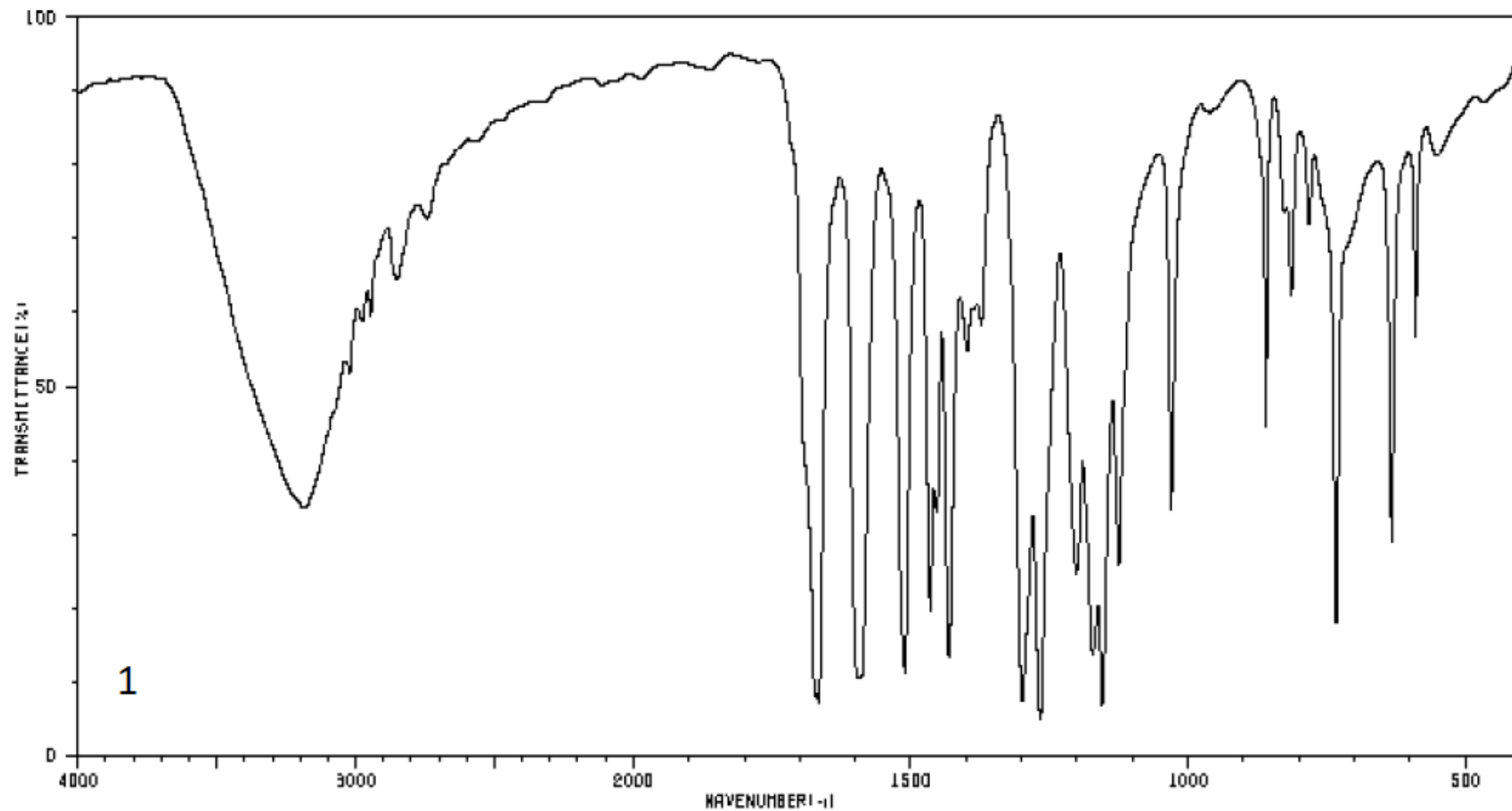
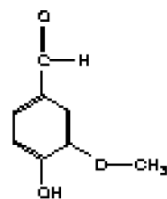
a) m-cymene, $C_{10}H_{14}$



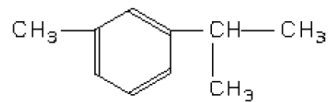
b) Vanillin acetate, $C_{10}H_{10}O_4$



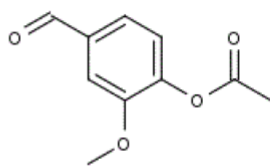
c) Vanillin, $C_8H_8O_3$



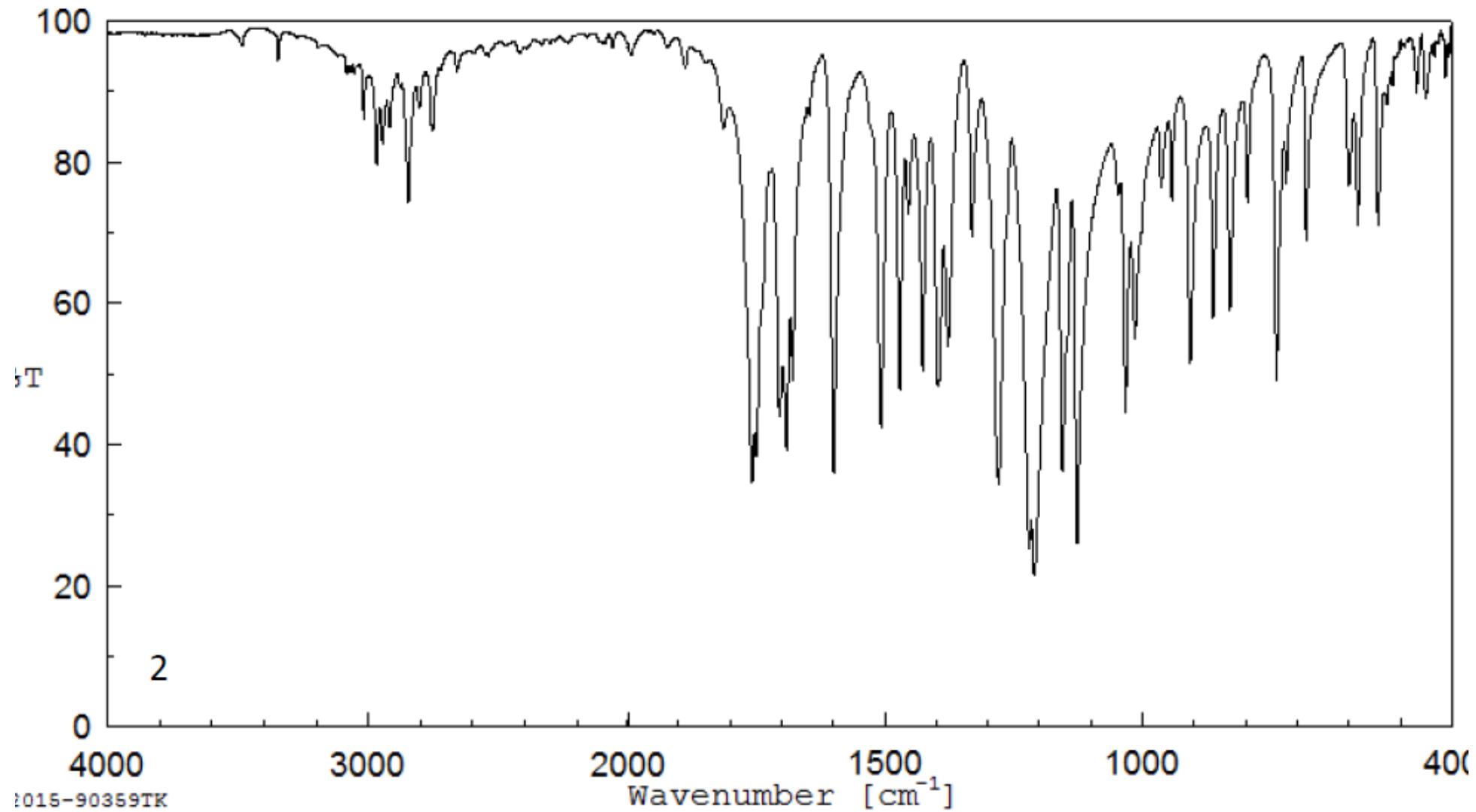
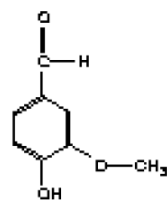
a) m-cymene, $C_{10}H_{14}$



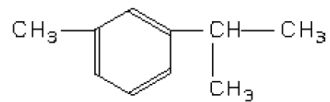
b) Vanillin acetate, $C_{10}H_{10}O_4$



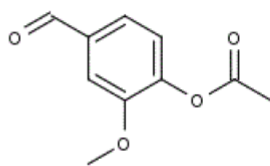
c) Vanillin, $C_8H_8O_3$



a) m-cymene, $C_{10}H_{14}$



b) Vanillin acetate, $C_{10}H_{10}O_4$



c) Vanillin, $C_8H_8O_3$

